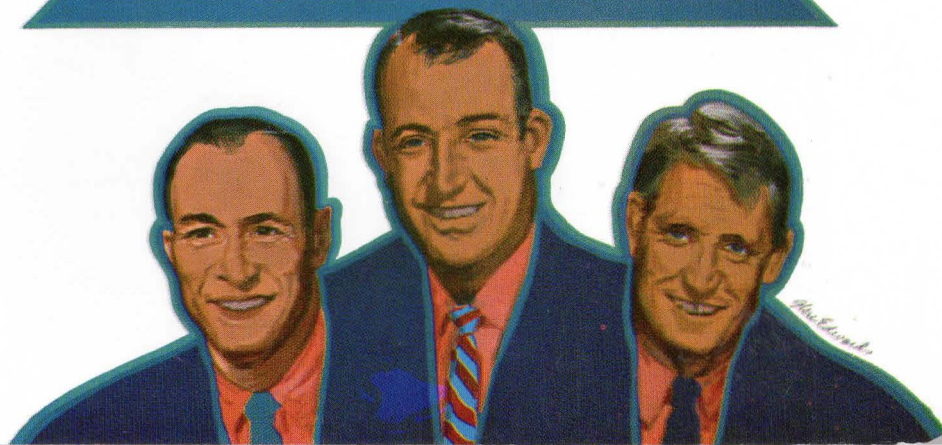
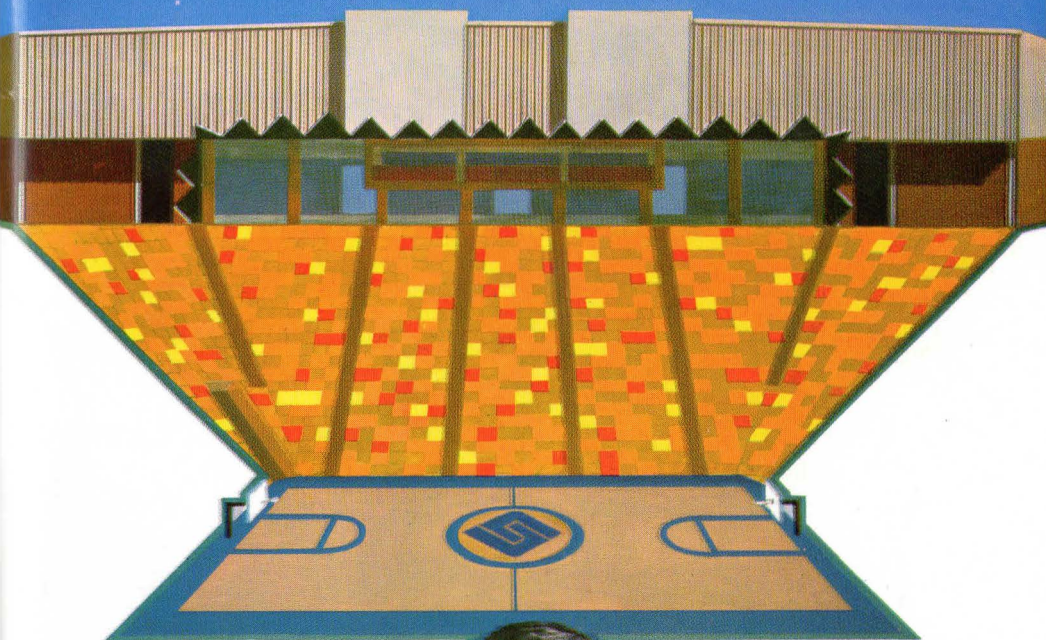
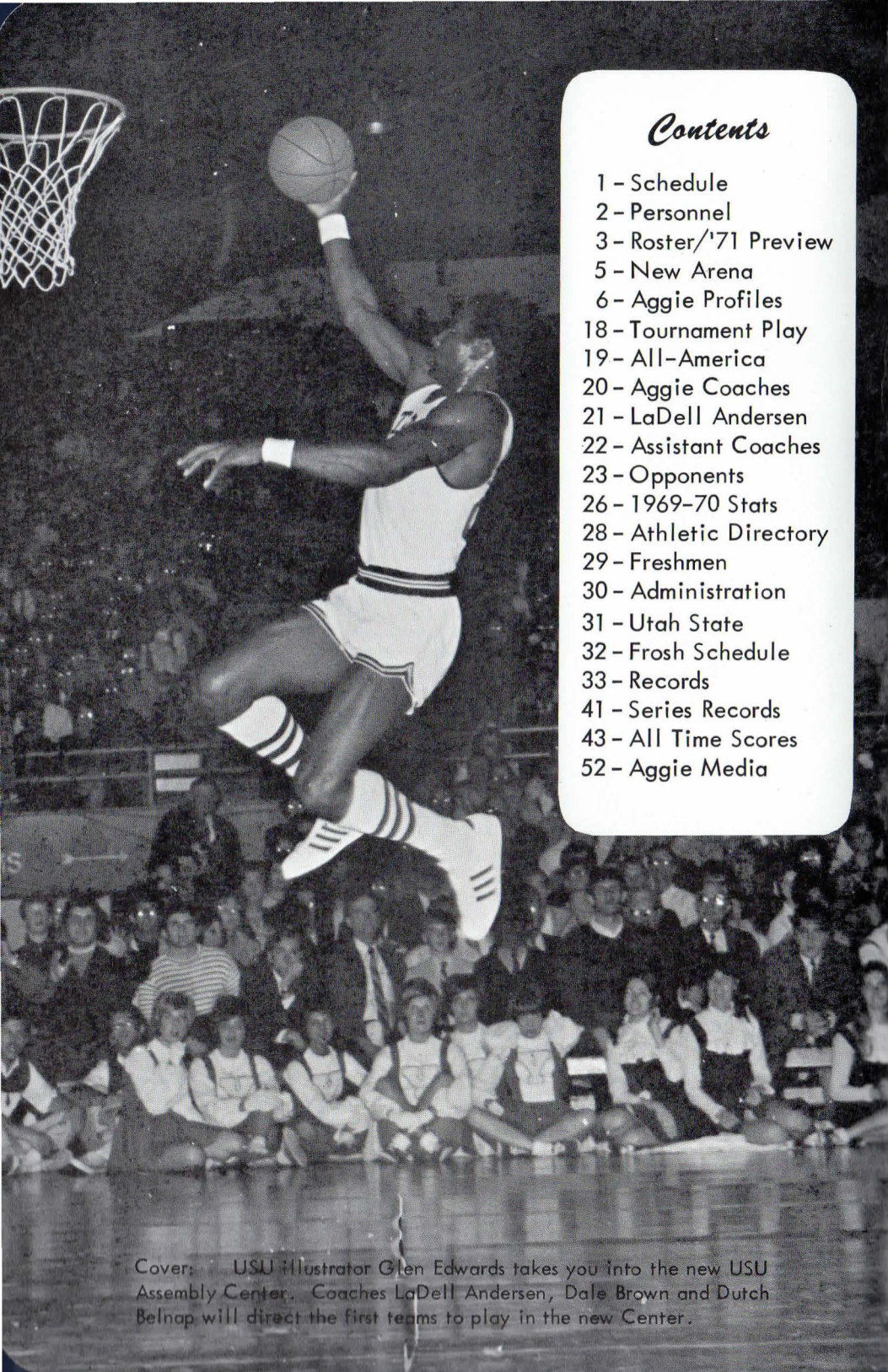


UTAH STATE BASKETBALL 1970-71





Contents

- 1 - Schedule
- 2 - Personnel
- 3 - Roster/'71 Preview
- 5 - New Arena
- 6 - Aggie Profiles
- 18 - Tournament Play
- 19 - All-America
- 20 - Aggie Coaches
- 21 - LaDell Andersen
- 22 - Assistant Coaches
- 23 - Opponents
- 26 - 1969-70 Stats
- 28 - Athletic Directory
- 29 - Freshmen
- 30 - Administration
- 31 - Utah State
- 32 - Frosh Schedule
- 33 - Records
- 41 - Series Records
- 43 - All Time Scores
- 52 - Aggie Media

Cover: USU Illustrator Glen Edwards takes you into the new USU Assembly Center. Coaches LaDell Andersen, Dale Brown and Dutch Belnap will direct the first teams to play in the new Center.

AGGIE SCHEDULE 1970-71

- | | |
|------------------|-------------------------------------|
| December 1, | Ohio State University at LOGAN |
| December 2, | West Texas State at LOGAN |
| December 5, | Utah University at LOGAN |
| December 7, | U of Calif., Santa Barbara at LOGAN |
| December 10, | Gonzaga at LOGAN |
| December 12, | St. Francis, Pa. at LOGAN |
| December 19, | Brigham Young University at Provo |
| December 21, | Fresno State at LOGAN |
| December 26-30 — | All-College Tournament |

Dec. 26

DePaul vs. Louisiana State

Montana State vs. Oklahoma City

Dec. 28

Wichita State vs. San Francisco

Utah State University vs. Bowling Green



- | | |
|--------------|-----------------------------------|
| January 9, | Denver at LOGAN |
| January 11, | Montana State at Montana |
| January 14, | Portland at LOGAN |
| January 16, | Seattle at LOGAN |
| January 21, | Utah University at Salt Lake |
| January 23, | Brigham Young University at LOGAN |
| January 25, | Long Island at LOGAN |
| January 30, | Air Force at Air Force Academy |
| February 1, | Montana State at LOGAN |
| February 6, | New Mexico State at Las Cruces |
| February 8, | Tulane University at New Orleans |
| February 13, | Seattle at Seattle |
| February 15, | Denver at Denver |
| February 23, | Weber State at LOGAN |
| February 27, | New Mexico State at LOGAN |

1970-71 PERSONNEL

RETURNING STARTERS

PLAYER-POS.	Class	GS	Pt./Rb. Avg.
Marvin Roberts, Forward	Sr.	28	22.4 / 13.9
Nate Williams, Forward	Jr.	28	21.7 / 9.3
Jeff Tebbs, Guard	Jr.	23	6.7 / 2.2
(Did not start vs. BYU in Logan)			
(Roberts-Williams did not start vs. Cal. State at Logan)			
Ed Epps, Guard/Forward	Sr.	6	6.9 / 2.8
Ron Hatch, Forward	Jr.	1	5.8 / 2.1

RETURNING LETTERMEN (6)

PLAYER-POS.	Class	G	Pts.	Rt./Rb. Avg.
**Marvin Roberts, Forward	Sr.	28	627	22.4/ 13.9
*Nate Williams, Forward	Jr.	28	608	21.7/ 9.3
*Jeff Tebbs, Guard	Jr.	28	189	6.7/ 2.2
*Ron Hatch, Forward	Jr.	26	151	5.8/ 2.1
**Ed Epps, Guard/Forward	Sr.	25	172	6.9/ 2.8
*Terry Wakefield, Guard	Jr.	26	76	2.9/ 0.7

SQUADMAN (1)

Walter Bees, Center Jr.
(Early season injury sidelined Bees for year - in 1969-70)

SOPHOMORES (6) (Five from 1969-70 Frosh Team)

PLAYER-POS.	G	Pts.	Avg.	High
Robert Lauriski, Forward	23	431	18.7	32
Lafayette Love, Center	22	309	14.0	26
Pat Cooley, Guard	23	279	12.1	29
Ken Thompson, Guard	21	207	9.9	15
Bryan Pavlish, Guard	22	170	7.7	21

(One from 1967-68 Frosh Team)

Dave Andersen, Forward 16 187 11.7 30

STARTERS/LETTERMEN NOT RETURNING (5)

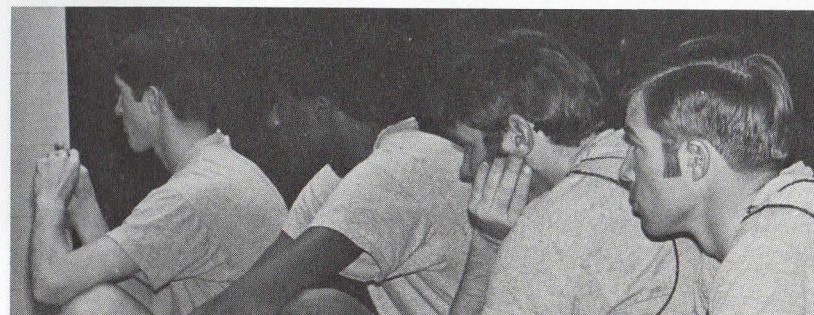
PLAYER-POS.	G	Pts	Pt./Rb. Avg.
***Tim Tollestrup, Center	29	329	11.3/ 8.3
***Paul Jeppesen, Guard	29	307	10.6/ 3.5
(Tollestrup & Jeppesen started each game, '69-70)			
**John Ericksen, Forward	28	103	3.7/ 3.3
***Dick Wade, Guard	15	25	1.7/ 0.9
***Chris Bean, Center	20	21	1.0/ 1.1

*Letters

VARSIITY ROSTER

5	Bryan Pavlish Salt Lake City, Utah	G	6-3	179	So. Frosh
10	Ken Thompson Smithfield, Utah	G	5-11	147	So. Frosh
11	Dave Andersen Bountiful, Utah	F	6-6	188	So. Frosh
12	*Jeff Tebbs Salt Lake City, Utah	G	5-11	170	Jr. Starter
14	*Terry Wakefield Milwaukee, Wisconsin	G	6-3	170	Jr. Reserve
21	**Ed Epps Washington, D.C.	G-F	6-4	220	Sr. Reserve
22	*Nate Williams Oakland, California	F	6-5	217	Jr. Starter
23	*Ron Hatch Midvale, Utah	F	6-4	187	Jr. Reserve
25	Pat Cooley Berkeley, California	G	6-3	177	So. Frosh
30	Lafayette Love Pittsburg, Calif.	C	6-10	200	So. Frosh
31	**Marvin Roberts Brooklyn, N.Y.	F	6-8	201	Sr. Starter
32	Robert Lauriski Logan, Utah	F	6-7	210	So. Frosh
44	Walter Bees Brooklyn, N.Y.	C	6-9	243	Jr. Frosh

*Lettermen



1970-71 AGGIE PREVIEW

Utah State University has carried, with pride, the position of runner-up in the NCAA west region for 1969-70. However, LaDell Andersen and staff are not looking for a repeat -- they are looking for a spot in the NCAA finals.

Andersen was named Rocky Mountain Coach of The Year for the third time since coming to USU in the fall of 1961. He has what may well be the two most talented forwards on one team in senior All-America Marvin Roberts and Nate Williams who was named one of the five best sophomores of 1969-70.

Roberts and Williams were named to the all-tourney team in the NCAA west regional at Seattle in March.

Add starter Jeff Tebbs at guard and lettermen Ed Eps, a swing guard/forward talent who specializes in the one-on-one play, along with juniors Ron Hatch and Terry Wakefield and Andersen has a strong hand for openers.

From the six lettermen the Aggies have nearly 2,000 points returning; approximately 66.4 points per game and 31 rebounds. Add to this group five players from the Aggie frosh team which averaged 86.5 points per game, the return of 6-9 Walter Bees from the injury list and 6-6 Dave Anderson from the '67-68 frosh team and the new USU Assembly Center which will seat 10,300 may be too small on opening night.

The Aggies were 13th in the nation in scoring with a 90.3 average last season.

The big search this season will be for an adequate center. Walter Bees and Lafayette Love will battle for the position but neither have game experience.

1970-71 CAPSULE

TEAM: Possibly best in USU history.

Forwards: Two all-America candidates - Marvin Roberts, definitely Nate Williams, probably

Great reserve strength: Ed Epps, Ron Hatch, Robert Lauriski and Dave Andersen

Height average: 6-6

Centers: This will be a question until the first game is played or maybe several games.

Walter Bees - Jr., 6-9, good rebounding - Lacks experience

Lafayette Love - soph., 6-10, good rebounding as frosh - wait and see

Guards: Tebbs started 23 games and missed two more due to an injury. Epps will be hard to keep out of the lineup. He is best on the broken play as a feeder or personally going to the boards for the basket.

Wakefield excellent outside shooter and a definite candidate
Height average: 6-2

Sophomores: Cooley made great progress on frosh team... has perfect jump shot form and is 51 percent accurate

Pavlish excellent jumper and should provide ready reserve strength

Thompson small at 5-11 but one of those quick little guards with 110 percent hustle... will be an asset to the team.

Average team height: 6-4 including Tebbs and Thompson at 5-11.

AGGIES' NEW HOME

"The new facility, the USU Assembly Center, puts us on a plain equal to the successful USU basketball heritage," is the way USU athletic director Frank "Buss" Williams views the new home of Aggie basketball.

The AC (Assembly Center) will seat 10,200 spectators in chair-back seats. There are 36 rows of seats completely circling the playing floor.

Complimenting the interior of the Center is the pleasant color scheme of the seats. Colors of light orange, dark orange, light gold and yellow were selected.

FACILITIES

Dressing areas for four teams; team meeting rooms; reception room; coaches offices; officials dressing area; first aid room; laundry area; class rooms with projector; a hall of honor; five ticket booths; and a press facility provide for most every need common to the staging of a major college game or a tournament.

In addition there are training facilities, showers and drying areas.

USU teams will use the north lockers and the visitors will use the south lockers. Each team will enter the playing floor via nearby ramps.

FLOOR

The playing floor is permanent and is constructed of maple on a cushion over concrete.

SEATING

Student seating will accommodate approximately 4,200. Season tickets available will be approximately 3,800. Areas have been designated for single game ticket buyers, visiting team fans, and special group sections.

EASY ACCESS

The building is designed to provide easy traffic control with four entrances, one on each side of the building. Concessions and rest room locations are at each corner of the building.

SOUND-SCOREBOARDS

The sound system is the most modern electronic device designed and uses the cluster sound program.

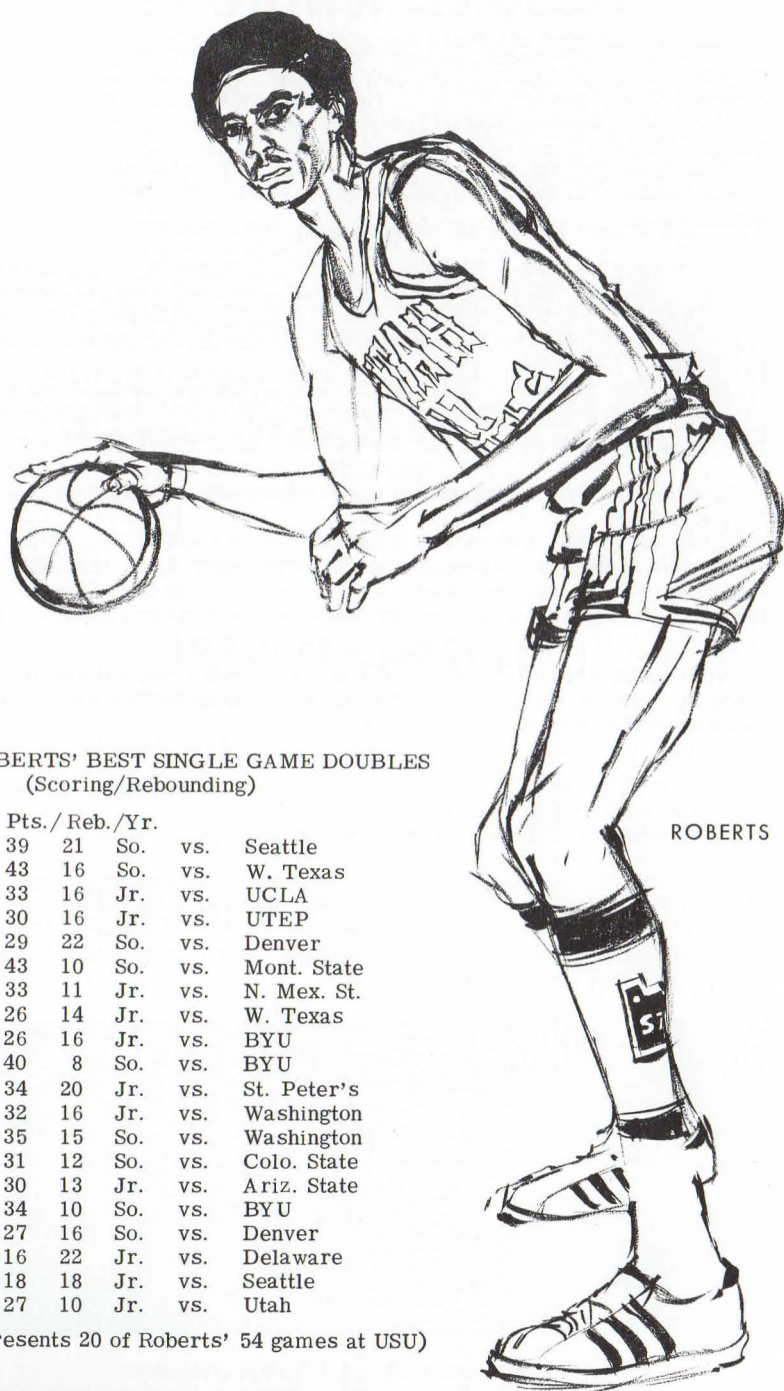
Scoreboards are installed at each end of the Center.

The Center will be the site of special events throughout the year. Theatre in the Round, concerts and general assemblies for the USU student-body and the community will make the facility in demand constantly.

Block lighting will allow gatherings of groups from 2,500 to 7,000 to meet in compact seating arrangements.



Mid-November work assembles playing floor.



ROBERTS' BEST SINGLE GAME DOUBLES (Scoring/Rebounding)

Pts./	Reb./	Yr.		
39	21	So.	vs.	Seattle
43	16	So.	vs.	W. Texas
33	16	Jr.	vs.	UCLA
30	16	Jr.	vs.	UTEP
29	22	So.	vs.	Denver
43	10	So.	vs.	Mont. State
33	11	Jr.	vs.	N. Mex. St.
26	14	Jr.	vs.	W. Texas
26	16	Jr.	vs.	BYU
40	8	So.	vs.	BYU
34	20	Jr.	vs.	St. Peter's
32	16	Jr.	vs.	Washington
35	15	So.	vs.	Washington
31	12	So.	vs.	Colo. State
30	13	Jr.	vs.	Ariz. State
34	10	So.	vs.	BYU
27	16	So.	vs.	Denver
16	22	Jr.	vs.	Delaware
18	18	Jr.	vs.	Seattle
27	10	Jr.	vs.	Utah

(Represents 20 of Roberts' 54 games at USU)

MARVIN ROBERTS No. 31, All-America, 6-8, 201, Senior Forward.
Brooklyn, New York - Wingate High.

(The following paragraphs are excerpts from the USU-UCLA-NCAA playoff game account printed in the Seattle Times, March 15, 1970, by Ivan Weiss.)

"Next time you need a definition of 'superstar,' ask UCLA's basketball players about Marvin Roberts.

"The Utah State forward's 33-point, 16-rebound performance in a losing cause against the Bruin juggernaut yesterday was the individual highlight of the West Regional Tournament, and his one-on-one duels with UCLA's Sidney Wicks were rare treats on which to end the local hoop season.

"The 6-foot-8-inch junior from the Brooklyn playgrounds hit shots from outside, drove the baseline for layins, and at times showed almost superhuman effort on the offensive backboards, under extreme pressure..."

ROBERTS' HONORS

1970-71	All-America Street & Smith Basketball Yearbook
1969-70	All-America Helms Foundation
1969-70	All-America Honorable Mention, UPI
1968-69	All-America Helms Foundation
1969-70	NCAA District Seven First Team
1968-69	NCAA District Seven First Team
1968-69	Sixth In NCAA Scoring as a Sophomore - 27.6
1968-69	Top Ten Sophomores - Basketball News/Basketball Weekly

ROBERTS' TOURNAMENT RECORD

1969-70	All-Tournament NCAA West Regional - First Team
1969-70	Milwaukee Classic Rebound Record - 37 (2 games)
1968-69	All-Tournament First Team Bluebonnet Classic (Houston)
1968-69	Bluebonnet Classic Rebound Record (42 (2 games)

ROBERTS' USU RECORDS

Career -	Third highest scorer in USU history with 1,345 points
	Third highest rebounder in USU history with 713 rebounds
Season -	Highest rebound average, 13.9 (28 games, 1970)
Game -	Most free throws attempted, 25 vs. Washington, 12-13-69

OPPONENTS PICK ROBERTS (ON ALL-OPPONENT TEAM)

UNANIMOUS - Missouri - Notre Dame and BYU
FIRST TEAM - Seattle - Colo. State - San Jose State - New Mexico State - Arizona State - Portland - Montana State

BACKGROUND

They call it the "Suicide League" in New York and a look at the players who graduate from the league tell you why.

Roberts, Ron Sanford of New Mexico and Rober Brown now in the ABA played at Wingate High ... add Connie Hawkins, Billy Cunningham, LeRoy Ellis, Rico Petricelli, Brian Newmark and numerous other college and pro players and the league had to be "suicide!"

Roberts actually was a one-season prep performer but since that senior year he has been sensational.

Business major - Married - Born: 1-29-50

ROBERTS' RECORD

Year	G	FG-FGA	%	FTM-FTA	%	RB-Avg	Pts	Avg	Asst.
1969-70	28	239-515	.46	149-206	.72	388-13.9	627	22.4	85
1968-69	26	271-564	.48	176-255	.69	325-12.5	718	27.6	59
Totals	54	510-1079	.47	325-461	.70	713-13.2	1,345	24.9	144



WILLIAMS

NATE WILLIAMS. No. 22 - All-America Candidate, 6-5, 217, Jr., Forward
Oakland, California - McClymonds High

Nate Williams teamed with All-America Marvin Roberts and Aggie teammates last season to take USU to the finals of the NCAA west region playoffs.

Williams, only a sophomore, played with the talent of an upperclassman. And its no understatement when Utah State fans claim that the duo of Roberts and Williams are very possibly the two most talented forwards playing on one major college basketball team this year.

ALL-AMERICA SOPHOMORE

Williams was picked to the first team of five sophomore all-America players along with former Michigan State star Ralph Simpson in 1970.

Based on the scouting reports from across the nation Williams was named to the select five by Mort Olshan's "Gold Sheet" a nation-wide basketball publication.

OLYMPIC TRIALS

The U.S. Olympic Committee selected Williams to tryout for the 1972 basketball team during July at the Air Force Academy. Williams was very impressive in early workouts but had to return to his home in Oakland, Calif., due to illness in his family.

WILLIAMS' HONORS

1969-70	All-America Sophomore First Team
1969-70	All-Tournament NCAA West Regional - First Team
1969-70	Top Sophomore by Basketball Yearbook
1969-70	Third highest scoring sophomore in USU history
1969-70	All-Tournament Milwaukee Classic First Team

WILLIAMS' HI-LITES

vs. N. Mex. State - scored 21 consecutive points on 8 fg and 5-5 ft in 8:29 stretch of first half	
vs. UTEP - scored eight consecutive fg and 10-12 in first half	
vs. St. Peter's - 45 points 15 rbds.	vs. W. Texas 40 points 11 rbds. in two consecutive games
vs. Seattle - 35 points 11 rbds.	vs. Houston - 26 points 22 rbds.
vs. N. Mex. State - 40 points 10 rbds.	vs. UTEP - 31 points 10 rbds.

WILLIAMS NAMED TO ALL-OPPONENT TEAMS

St. Peter's - Denver - Portland - New Mexico State

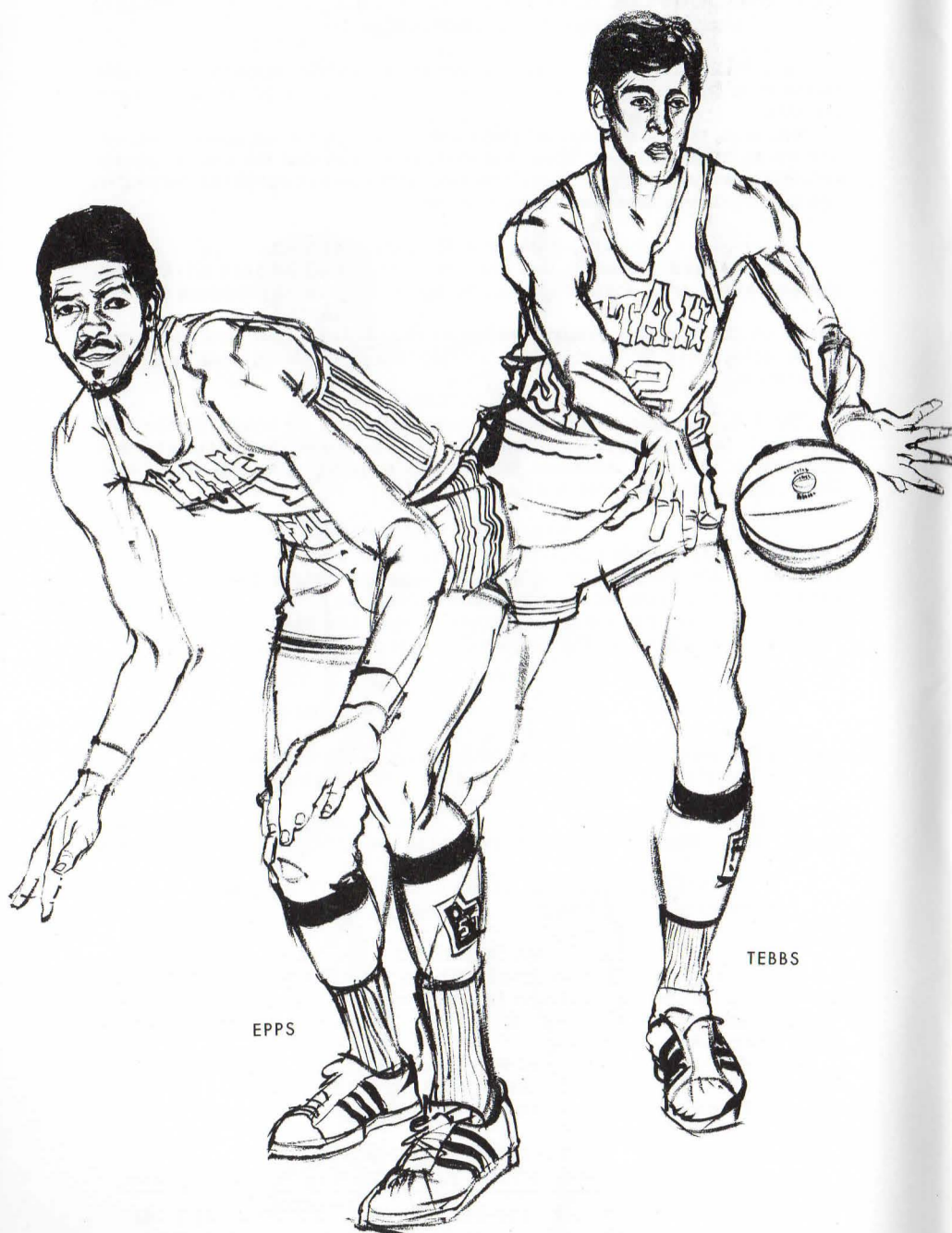
BACKGROUND

Another in a long line of great athletes from McClymonds High School in Oakland, California, Williams has followed the footsteps of Bill Russell, Vada Pinson, Frank Robinson, Paul Silas, Jim Hines, Wendell Hayes and many other famous athletes.

Very strong, quick, fast and rebounds with anyone. High jumped 6-7 in high school. Set frosh rebound record, 15.9, in 1968-69.... Married - Physical Education major - Born 6-2-50.

WILLIAMS' RECORD

Year	G	FGM-FGA	%	FTM-FTA	%	RB-Avg	Pts	Avg	Asst.
1969-70	28	246-518	.47	116-161	.72	260-9.3	608	21.7	52
1968-69	16	137-302	.45	68-91	.75	254-15.9	342	21.4	42



ED EPPS - No. 21 - Letterman - 6-4 - 220 - Senior - Guard - Washington, D.C. - Cardoza High

In the NCAA West Regional at Seattle it was Epps' 22-foot jump shot with :13 seconds to play that gave USU the 69-68 victory and a shot at UCLA.

Against UCLA, although not a starter, Epps scored ten points in the first half and played sparingly in the second half to finish the game with 12 points.

During the season Epps scored three points in the final minute against Seattle to salvage an 82-81 win for USU. Epps likes the one-on-one situations and usually wins the battle.

BACKGROUND

From Cardoza High School in Washington, D.C. where he learned the fine art of one-on-one play - came to USU from Ft. Pierce (Fla.) JC - started 25 games as USU soph - officer in men's physical education club -

Physical Education major - Married - Born 10-11-47

TWO-YEAR RECORD

Year	G	FGM-FGA	%	FTM-FTA	%	RB-Avg	Pts	Avg	Asst
1969-70	25	66-148	.45	40-52	.77	69- 2.8	172	6.9	38
1968-69	26	135-332	.41	71-109	.65	136- 5.2	341	13.1	63

JEFF TEBBS - No. 12 - Letterman - 5-11 - 170 - Junior - Guard - Salt Lake City - Hillcrest High

Tebbs started 23 games for USU as a sophomore last season. The 5-11, 170-pounds of hustle caught a number of basketball coaches off guard with his successful rookie season.

The big games were some of Tebbs' best efforts. Against Houston, Tebbs set a USU record with 11 assists as the Ags won 91-84. He scored 22 points and had five rebounds.

In each Utah game Tebbs was a factor. He scored 13 points at Utah and at home his six-for-six free throws made the difference in the Aggie overtime win.

The guard line competition will be more competitive this year. Tebbs is the only starting guard returning and his experience will make a difference.

Listed as one of five top sophomores in NCAA District Seven.

BACKGROUND

Played for Art Hughes at Hillcrest High School in SLC - Brother of Terry Tebbs an all-America player at BYU - Tebbs and teammate Ron Hatch led Hillcrest to state title as seniors - Totaled 60 assists in 16 games on USU frosh - Named Utah's high school "Playmaker of the Year" in Utah prep circles in 1967-68.

Business major - Married - Born 4-8-50

TEBBS' RECORD

Year	G	FGM-FGA	%	FTM-FTA	%	RB-Avg	Pts	Avg	Asst
1969-70	28	65-164	.40	59-77	.77	62- 2.2	189	6.7	98
1968-69	16	74-177	.42	29-44	.66	35- 2.1	177	11.1	60



RON HATCH No. 23, Letterman, 6-4, 187, Junior, Forward - Midvale, Utah - Hillcrest High

Teammates called him "Slab" last season but Hatch has the last laugh - he came in twenty-pounds lighter this fall and ready to challenge the field.

Against Denver at Logan Hatch came off the bench to score 11 consecutive goals and 11-13 for the game. The FG accuracy of .846 percent is a school record.

In his one starting assignment Hatch led all scorers with 29 points.

Coaches rate Hatch as extremely accurate within 12 feet of the goal.

BACKGROUND

Hatch had the good fortune of playing for Art Hughes at Hillcrest High School in SLC - along with Tebbs, Hatch was a key figure in the state title won by Hillcrest - Hatch played center.

Business major - Married - Born 2-9-50

SOPHOMORE-FROSH RECORD

Year	G	FGM-FGA	%	FTM-FTA	%	RB-Avg	Pts	Avg	Asst.
1969-70	26	58-109	.53	35-44	.79	55-2.1	151	5.8	20
1968-69	18	86-152	.57	58-79	.73	118-7.4	230	14.4	12

TERRY WAKEFIELD - No. 14 - Letterman - 6-3 - 170 - Junior - Guard Milwaukee, Wisconsin - Marquette High.

Three times Wakefield scored ten or more points including 12 points and four assists in a 97-94 win over rival BYU.

Very aggressive and determined - runs the fast break well and works hard on defense - possible starter this year.

BACKGROUND

Came to USU from Air Force Academy prep school - all-Catholic League at Marquette High in Milwaukee - started on USU frosh team with Tebbs - named top freshman student athlete at USU.

Finance major/accounting minor - Married - Born 5-29-49

SOPHOMORE-FROSH RECORD

Year	G	FGM-FGA	%	FTM-FTA	%	RB	Pts	Avg	Asst.
1969-70	26	34-76	.45	8-10	.80	17	76	2.9	21
1968-69	16	70-137	.51	18-22	.82	39	158	9.9	37

WALTER BEES - No. 44 - Squadman - 6-9 - 243 - Junior - Center - Brooklyn, New York - Wingate High

Bees had the misfortune of a knee injury last December and had his season limited to just six games.

In the limited time Bees performed he displayed a real ability to rebound. Against Utah it was Bees' ten rebounds that sparked the Aggie domination of the Utes on their home court.

Blocking shots and rebounding is Bees' line.

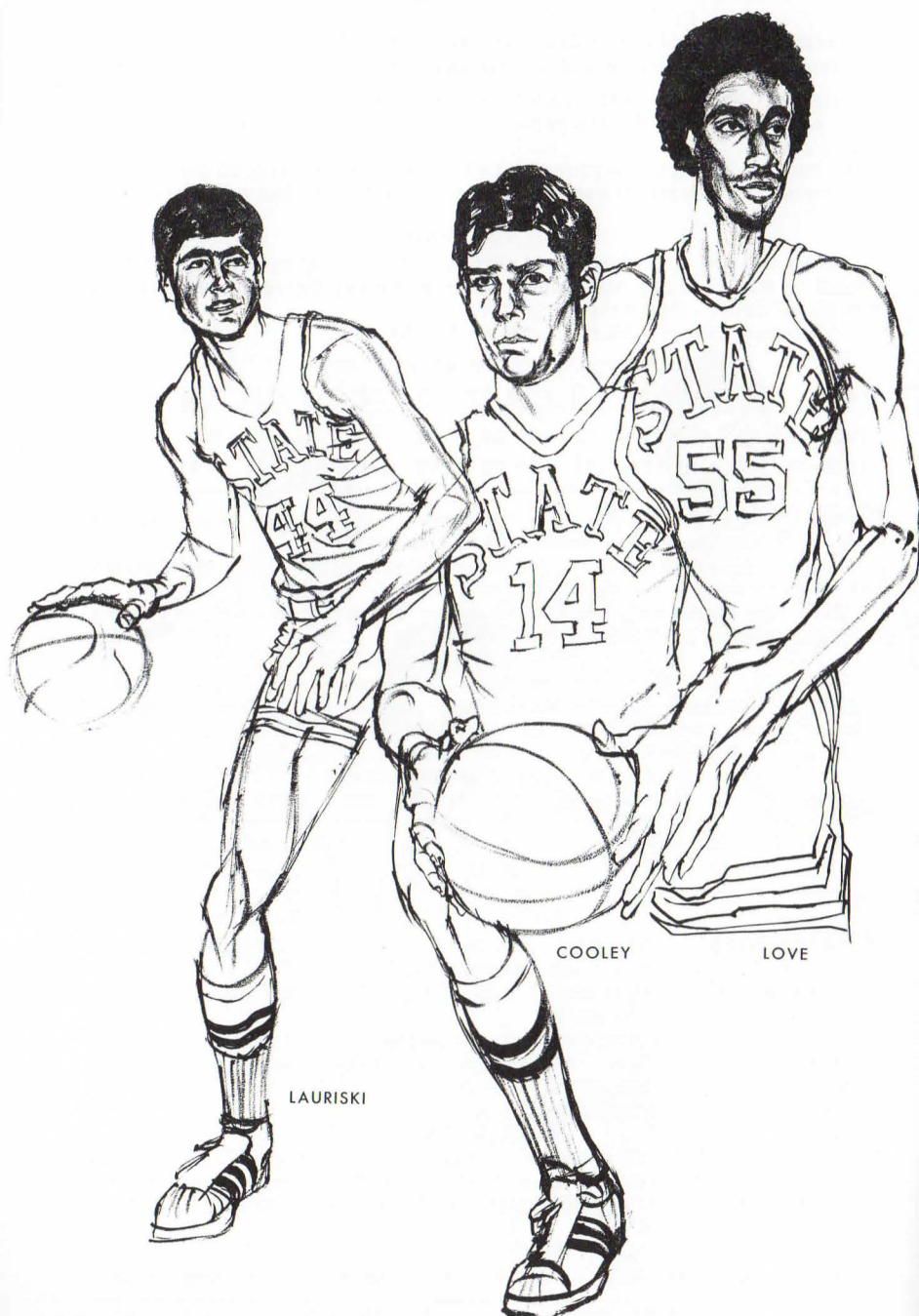
BACKGROUND

Bees played for Jack Kaminer, former coach at Wingate High School in Brooklyn, N.Y., the same coach and school that graduated Marvin Roberts.

In New York Bees' father plays in a dance band with Lew Alcindor's father. Born - 5-16-50

SOPHOMORE-FROSH RECORD

Year	G	FGM-FGA	%	FTM-FTA	%	RB-Avg	Pts	Avg	Asst.
1969-70	6	4-28	.14	3-9	.33	39-6.5	11	1.8	3
1968-69	16	97-208	.47	52-99	.52	216-13.5	246	15.4	14



ROBERT LAURISKI - No. 32 - Sophomore - 6-7 - 210 - Forward - Logan, Utah - Logan High

Lauriski is the third great forward in as many years to move into varsity competition from USU frosh teams. (Roberts and Williams preceded Lauriski.)

Lauriski led the USU frosh in scoring with an 18.7 average in 23 games. Lauriski also averaged ten rebounds per game.

Look for Lauriski to be a key factor in the 1971 season.

BACKGROUND

Prep all-America, two years all-state and MVP in state for 1969, playing for Logan High School - set Logan single game records of 41 points and 28 rebounds.

Business major - single - Born 9-27-51

FROSH RECORD

Year	G	FGM-FGA	%	FTM-FTA	%	RB-Avg	Pts	Avg	Asst.
1969-70	23	171-380	.45	289-117	.76	233-10.1	431	18.7	56

PAT COOLEY - No. 25 - Sophomore - 6-3 - 177 - Guard - Berkeley, California - Berkeley High

Cooley has near ideal form for his accurate jump shot. After shooting .51 percent from the field and scoring 12 points per game for the frosh, Cooley is battling for a starting position on the guard line.

Cooley set frosh single game record of ten assists against Denver. He also set a single game field goal mark of .857 (12-14) against Snow JC.

BACKGROUND

Named to area "Dream Team" playing for Berkeley High - Co-captain at Berkeley - Single - Born 1-17-51.

FROSH RECORD

Year	G	FGM-FGA	%	FTM-FTA	%	RB-Avg	Pts	Avg	Asst.
1969-70	23	112-218	.51	55-76	.72	56-2.4	279	12.1	57

LAFAYETTE "LaLa" LOVE - No. 30 - Sophomore - 6-10 - 200 - Center - Pittsburg, California - Pittsburg High

Love led the frosh with 12.6 rebounds per game last season. He also averaged 14 points per game for the season.

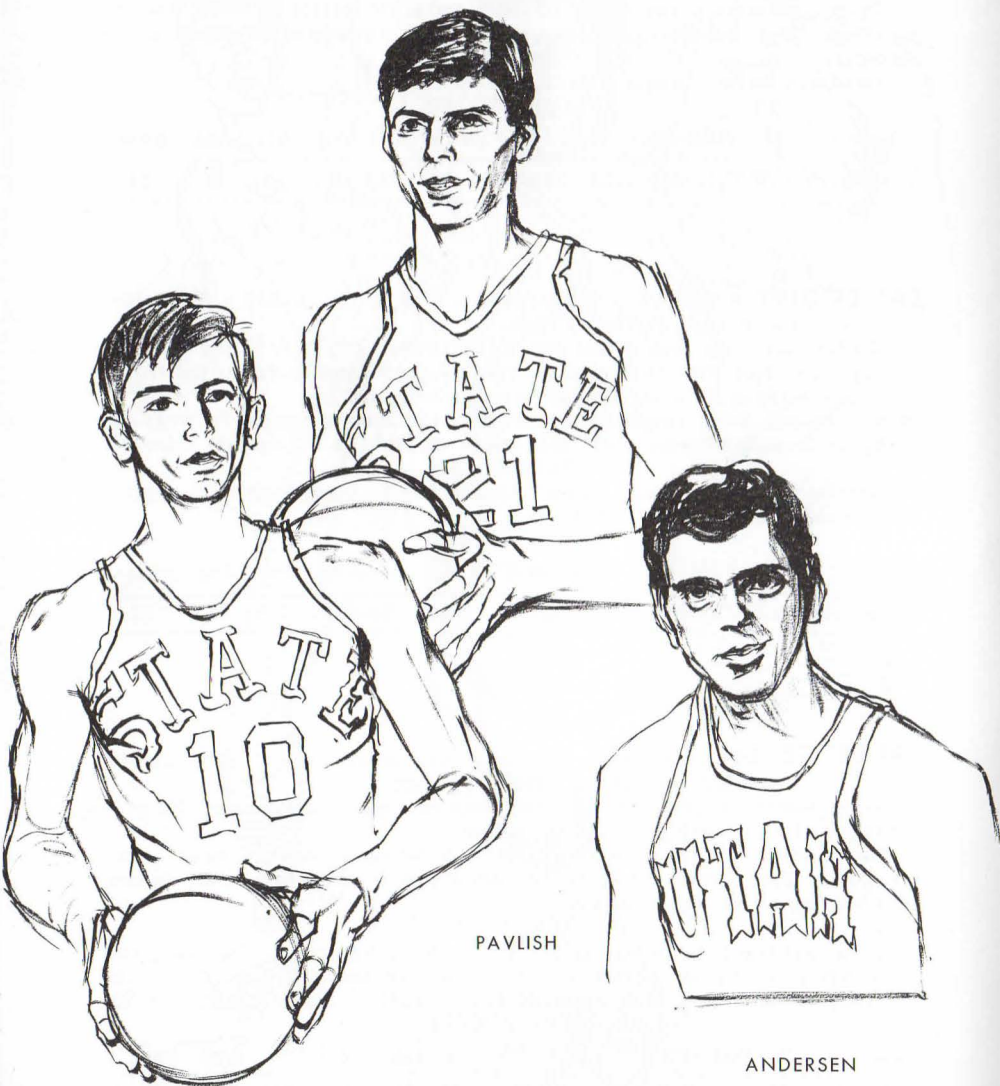
Competition for the center spot will be between Love and Bees. Both are young and inexperienced but the development of these two may have a real bearing on the Aggie season.

BACKGROUND

LaLa averaged 27 rebounds per game as a prep senior - including one game when he totaled 39 rebounds for school record at Pittsburg - named to every all-star team and received MVP award - Single - Born 8-4-50.

FROSH RECORD

Year	G	FGM-FGA	%	FTM-FTA	%	RB-Avg	Pts	Avg	Asst.
1969-70	22	128-269	.48	53-87	.61	277-12.6	309	14.0	19



THOMPSON

PAVLISH

ANDERSEN

KEN THOMPSON No. 10 - Sophomore - 5-11 - 147 - Guard - Smithfield, Utah - Sky View High

Thompson is another of those small but cat-quick players who causes the "big guys" fits. Beyond his speed and quickness he can score and attack the ball.

Scored ten points per game and set frosh records for assists (85 season) and single game interceptions and recoveries, 6.

BACKGROUND

Basketball and track athlete at Sky View - all-state in both sports - second in state pole vault - third of seven children.

Physical Education major/history minor - single - Born 6-25-51

FROSH RECORD

Year	G	FGM-FGA	%	FTM-FTA	%	RB-Avg	Pts	Avg	Asst.
1969-70	21	79-168	.47	49-69	.71	44-2.1	207	9.9	85

BRYAN PAVLISH - No. 5 - Sophomore - 6-3 - 179 - Guard - Salt Lake City, Utah - Olympus High

Pavlish is a strong athlete with all the attributes including above average leaping ability. A part-time starter for the frosh, Pavilish led the team in free throw shooting with .79 percent.

BACKGROUND

All-state honors at Olympus High - team captain - pre-dentistry major - single - Born 3-10-51.

FROSH RECORD

Year	G	FGM-FGA	%	FTM-FTA	%	RB-Avg	Pts	Avg	Asst.
1969-70	22	70-155	.45	30-38	.79	45-2.0	170	7.7	42

DAVE ANDERSEN No. 11 - Sophomore - 6-6 - 188 - Forward - Bountiful, Utah - Bountiful High

Played on the USU frosh team with Roberts in 1967-68 - served an LDS mission to Belgium - set scoring records at Bountiful High - all-state and all-area selection 1967 - pre-law major - single - Born 3-17-49.

FROSH RECORD

Year	G	FGM-FGA	%	FTM-FTA	%	RB-Avg	Pts	Avg	Asst.
1967-68	16	72-164	.44	43-62	.69	138-8.6	187	11.7	12

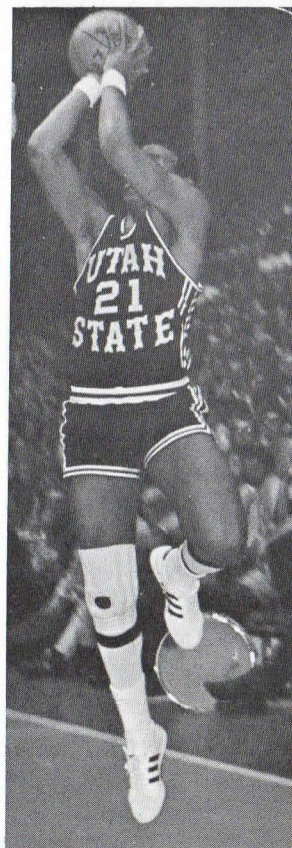


AGGIE TOURNAMENT PLAY

1970	NCAA WEST REGIONAL (Seattle)	
91	UTEP (at Provo)	81
69	Santa Clara	68
79	UCLA	101
1967	NATIONAL INVITATIONAL TOURNAMENT (New York)	
76	Rutgers	78
	(0-1)	
1964	NCAA WEST REGIONALS (Corvallis)	
92	Arizona State	90
58	San Francisco	64
78	Seattle	88
	(1-2)	
1963	NCAA WEST REGIONALS (Eugene)	
75	Arizona State (OT)	79
	(0-1)	
1962	NCAA WEST REGIONALS (Corvallis and Provo)	
78	Arizona State	73
62	UCLA	73
71	Pepperdine	75
	(1-2)	
1960	NATIONAL INVITATIONAL TOURNAMENT (New York)	
73	Villanova (OT)	72
62	Providence	68
99	St. Bonaventure	83
	(2-1)	
1939	FAR WEST REGIONALS (San Francisco)	
39	Oklahoma	50
51	Texas	49
	(1-1)	
1936	AMERICAN OLYMPIC DIST. PLAYOFF (Kansas City)	
37	Kansas	39
42	Kansas	37
50	Kansas	33
	Championship Series (New York)	
48	Wilmering YMCA	62
	(2-2)	

DECEMBER TOURNEY CHAMPIONSHIPS

1952	HOLIDAY FESTIVAL (New York City)	
67	NYU	61
79	Miami (Ohio)	78
59	Manhattan (3-0)	57
1959	ALL-COLLEGE (Oklahoma City)	
75	Niagara	65
75	Wichita	68
75	Oklahoma City (3-0)	59



Ed Epps vs. UCLA

AGGIE ALL-AMERICA PLAYERS

Wayne Estes

Less than two hours after the greatest game of his career Wayne Estes, consensus all-America in 1965, was electrocuted in a freak accident near the USU campus.

Selected as an all-America player his junior year Estes is the only player in USU history to score more than 2,000 points in a career. Estes scored 2,001 and had at least seven games to play and a possibility of 210 additional points.

Estes' records can be found in the record section of this book. Estes had all the shots - the set, the jump, key and baseline hooks, power shots and he made the fast break effective.

Year	G	FGM	FGA	Pct.	FTM	FTA	Pct.	Reb.-Avg.	TP	Avg.
'62-63	27	205	428	.479	129	154	.838	256- 9.5	539	20.0
'63-64	29	309	654	.472	203	238	.853	377-13.0	821	28.3
'64-65	19	252	518	.486	137	156	.878	260-13.7	641	33.7

Cornell Green

Cornell Green was first famous for his talents on the Utah State basketball court before he became famous as an all-pro defensive back for the Dallas Cowboys. For four consecutive years Green played in the Pro-Bowl.

Green was all-America at USU during his sophomore and senior seasons. He was all-Skyline Conference three years. As a sophomore Green led the Aggies to the NIT consolation trophy. His senior season the Aggies played in the NCAA regional tourney.

Green holds the career rebound record at USU with 1,067.

Year	G	FGM	FGA	Pct.	FTM	FTA	Pct.	Reb.-Avg.	TP	Avg.
'59-60	29	225	460	.489	165	266	.621	403-13.8	615	21.2
'60-61	26	188	438	.424	154	245	.628	322-12.4	530	20.3
'61-62	29	259	542	.478	227	324	.701	342-11.8	745	25.6

Shaler Halimon

Shaler Halimon was the nation's eighth leading scorer in 1968 with a 26.8 average. His talents were more than scoring - Halimon averaged more than 10 rebounds per game during his two year career at USU and led the team for assists for two season.

Now with the Portland Trailblazers of the NBA, Halimon won the affection of the Chicago Bulls' fans last season. "Supershay" was a first round draft choice of the Philadelphia '76ers of the NBA and the Dallas of the ABA.

Year	G	FGM	FGA	Pct.	FTM	FTA	Pct.	Reb.-Avg.	TP	Avg.
'66-67	26	247	553	.446	119	167	.713	226- 8.7	613	23.5
'67-68	25	256	571	.448	159	215	.740	292-11.7	671	26.8

Marvin Roberts

While the Maravich-Murphy-Mount trio was causing vibrations in college basketball USU's Marvin Roberts was putting together some impressive credentials for 1970-71 when the all-star hunters would be looking for new basketball talents.

Already Roberts has been named to the Helms Foundation all-America team as a sophomore and junior. He has been pre-season choice on several national selections.

On the basis of his performance to date Roberts may be one of the top five players in the college game this year. Few if any player today can match his shooting, rebounding, assist and defensive talents. (See page seven for details.)

USU COACHING HISTORY

Coach LaDell Andersen is the ninth State head basketball coach. His 22-7 record of 1961-62 is the best first-year record ever compiled by a USU basketball coach. Andersen also is the only Utah State coach who has put 20-game winning hoop seasons back-to-back.

Andersen replaced H. Cecil Baker who was retired at the end of the 1960-61 season after 11 campaigns. The Staters with Baker won 157 games, lost 142, for a .525 percentage.

N I T

There were two highly successful seasons in Baker's coaching career at Utah State. The 1958-59 team posted a 18-7 record, and the 1959-60 team finished 24-5 and third in the National Invitational Tournament. During these two seasons Utah State won 15 straight home games.

1909

Clayton T. Teetzel was the first to be hired in 1909. The Michigan graduate in five seasons compiled a 22-19 record.

From 1915 through 1919, Joseph K. Jensen coached the Aggie hoopsters. He finished with a five season record of 17-16.

ROMNEY

E. Lowell Romney guided the Aggies through the next 22 basketball seasons and won championships in 1926, 1935 and 1936.

The 1936 Aggie team played in the Olympic playoffs after winning two of three bracket games from previously undefeated Kansas. The 1939 Utah State team finished third in the NCAA play-offs at San Francisco World's Fair. Romney's 22 season basketball record was 225 wins and 159 defeats.

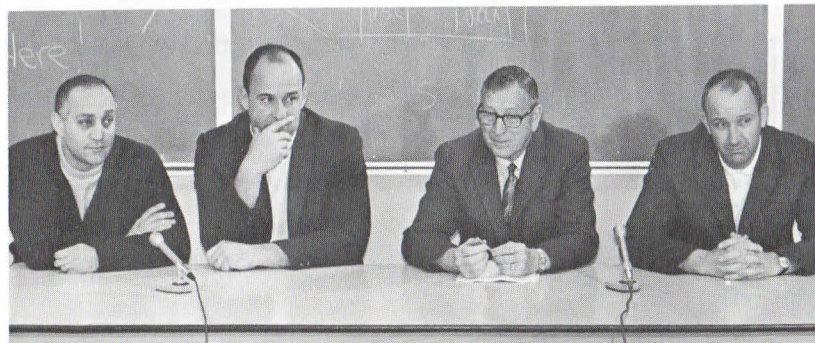
BURNETT, LEE

Robert W. Burnett coached the Aggies to a 6-10 record during the 1941-42 season, and D. D. Young had two war year teams which won 24, lost 17.

In 1942-46, H. B. Lee, who later became athletic director at Kansas State University, took over Aggie basketball and in two campaigns won 21 games, lost 22.

1947-48

Joe Whitesides coached three seasons after Lee and compiled a 36-54 record before yielding the coaching duties to Coach Cecil Baker following the 1949-50 season.



L-R: Tarkanian, LB State; Garibaldi, Santa Clara; Wooden, UCLA; Andersen, USU

COACH LADELL ANDERSEN

LaDell Andersen, three time NCCA District Seven "Coach of the Year" at USU, will field his 10th State team on Dec. 1, 1970.

Winning well over sixty percent for nine years Andersen is looking for another season of twenty-plus victories. Andersen's teams have won 20 or more games in five of his seasons.

An axiom about nice guys finishing last has been disproved by Andersen, both on and off the court. Andersen respects people and is openly respected by his coaching colleagues, members of the news media and by his team members.

In his first three years as State head coach the 40-year old Andersen guided his teams into the NCAA basketball playoffs all three seasons. He is the only USU basketball coach to take a team to the NCAA tourney more than once.

Andersen's path to USU is an interesting one both as a player and a coach.

In 1947 Andersen came to State on a "make-good" type scholarship after graduating from Malad, Idaho high school.

During a mid-December game his sophomore year Andersen seized upon opportunity when he sparked State to a win by scoring nine points from his guard position in the last three minutes.

Andersen started every game from that point through his senior year at USU. He was twice selected as an all-Skyline guard. His high scoring game was 27 points.

Following college Andersen played two years of service basketball at Sandia Base, New Mexico. He was a member of the all-Service team which competed in the 1952 Olympic playoffs at Madison Square Garden.

In 1953 Andersen joined the Denver Central Bankers team and was selected all-NIBL guard for two seasons.

From Denver and playing the game Andersen moved into the coaching profession when he became Jack Gardner's assistant at Utah in 1956. He became head coach at Utah State in the fall of 1961.

For a hobby Andersen enjoys working on his golf game. He held the course record for 18 holes with a score of 65 at the Logan Golf and Country Club until it was later broken in tournament play.

LaDell is married to the former Donna Jensen of Fort Shaw, Mont. They have a quintet of boys -- Clint, age 19; Larry, 18; Ritchie, 16; Bobby, 14; and Jimmy, 12.



ANDERSEN'S RECORD

Year	Home	Road	Season	Tournament
1961-62	11-2	11-5	22- 7 .759	NCAA
1962-63	12-1	8-6	20- 7 .741	NCAA
1963-64	13-1	8-7	21- 8 .724	NCAA
1964-65	10-3	3-9	13-12 .520	None
1965-66	8-6	4-8	12-14 .462	None
1966-67	17-1	5-5	22- 6 .786	NIT
1967-68	10-3	4-8	14-11 .560	None
1968-69	7-5	3-12	10-17 .370	None
1969-70	13-1	9-6	22- 7 .759	NCAA
Totals	101-23 (.815)	55-66 (.455)	156-89 .637	

Assistant Coaches

DALE BROWN

Assistant Varsity Coach
(Minot State '57)

Dale Brown was named assistant varsity coach in 1968 after two seasons as freshman coach.

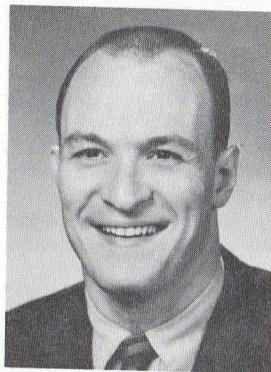
Brown, 34, is a native of Minot, N.D. He graduated from Minot State College in 1957 and later received a masters degree from the University of Oregon.

At Minot State Brown became the only athlete in the history of the school to earn 12 letters.

Brown's coaching career began at Columbus, N.D., in 1957. In 1959 Brown moved to Ryan High School in Minot where he stayed until 1965. Prior to coming to State, Brown was coaching at Palm Springs, Calif.

Along with coaching duties at State, Brown is responsible for national recruiting and scouting.

Dale and his wife, Vonnie, have a daughter, Robyn, age 7.



DUTCH BELNAP

(USU '58)

Gordon "Dutch" Belnap, a 1958 graduate of Utah State, became freshman basketball coach two seasons ago and immediately directed the yearlings to a 14-2 record.

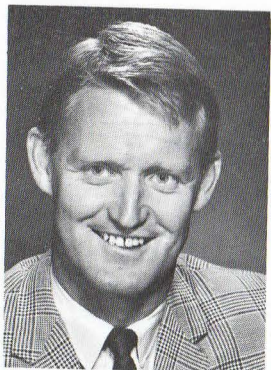
Belnap, 38, is a native of Ogden, Utah, where he attended Weber High School. He later attended Weber College and played football and basketball. Belnap received a masters degree from Utah State in 1965.

Prior to attending USU Belnap spent three years in the Navy in the Special Services unit working in the athletic programs.

In 1958 Belnap began his coaching career at Weber High School in Ogden as head baseball coach and assistant in football and basketball. He became head basketball coach at Weber High in '66.

During the summers of '67 and '68 Belnap worked as general manager of the Los Angeles Dodgers' minor league baseball club in Ogden.

Dutch and his wife, Faye, have three sons, Rob, 12, Tim, 11; and Mike, 9.



1970-71 AGGIE OPPONENTS

OHIO STATE (12-1-70) Logan
Coach: Fred Taylor (OSU '50)
Athletic Dir.: J. Edward Weaver
Enrollment: 41,000; Conf.: Big Ten
Location: Columbus, O.; Rec.: 17-7
Nickname: Buckeyes
Colors: Scarlet/Gray
Lettermen Ret.: 3; Starters 1
Honor Candidate: Jim Clemons, 6-3
Information: Wilbur E. Snyppe
(422-6861)
Series: 1-1; Last score: USU-79
OSU-66 (1963-64)

UTAH (12-5-70) Logan
(1-21-70) Salt Lake City
Coach: Jack Gardner (Southern Cal)
Athletic Dir: James R. "Bud" Jack
Enrollment: 23,747
Conf: Western Athletic
Location: Salt Lake City; Rec: 18-10
Nickname: Utes, Redskins
Colors: Crimson/White
Lettermen Ret: 7; starters: Jim Mahler, Mike Newlin & Ken Gardner
Honor Candidate: Mike Newlin, 6-4
Information: Ron Fessenden
(322-8171)
Series: 63-92; Last score: 106-98 (OT), USU 1969-70

GONZAGA (12-10-70) Logan
Coach: T. H. "Hank" Anderson
(Oregon '41)
Ath. Dir: T. H. "Hank" Anderson
Enrollment: 2,772; Conf: Big Sky
Location: Spokane, Wash.;
Nickname: Bulldogs, Zags
Colors: Columbia Blue/White
Lettermen Ret: 7; Starters: 4
1969-70 Record: 10-16
Information: Paul Schafer (328-4220)
Series: 3-1; Last score: 92-91,
USU 1955-56

BRIGHAM YOUNG UNIVERSITY
(12-19-70) Provo, (1-23-71) Logan
Coach: Stan Watts (BYU '38)
Ath. Director: Stan Watts
Enrollment: 25,000; Conf: West. Ath.
Location: Provo, Utah; Rec: 8-18
Nickname: Cougars
Colors: Royal Blue/White
Lettermen Ret: 4; Starters: 3
Honor Candidates: Phil Tollestrup, 6-6, Junior, Forward
Information: Dave Schulthess
(801) 374-1211
Series: 65-98; Last score: 86-73,
USU 1969-70

WEST TEXAS STATE (12-2-70) Logan
Coach: Dennis Walling, (WTS)
Athletic Dir.: Joe Kerbel
Enrollment: 8,000
Conf: Miss. Val. (not competing 70-71)
Location: Canyon, Texas; Rec: 12-13
Nickname: Buffaloes
Colors: Maroon/White
Lettermen Ret: 4; Starters: 1
Honor Candidates: Steve Davidson 6-7
Information: Tommy Bryant
(656-3976)
Series: 3-2; Last score: 83-73,
USU 1969-70

UC SANTA BARBARA (127-70)
Logan
Coach: Ralph Barkey (UCSB)
Athletic Dir: Jack C. Curtice
Enrollment: 13,500; Conf: PCAA
Location: Santa Barbara, Calif.
Record: 1969-70: 12-14
Nickname: Gauchos
Colors: Blue/Gold
Lettermen Ret: 8; Starters: 2
Honor Candidate: Doug Rex, 6-8,
Senior, Center
Information: Donn R. Bernstein
(961-3428)
Series: First game

ST. FRANCIS (12-12-70) Logan
Coach: John Hiller (Notre Dame)
Athletic Dir: I. Vince Davis
Enrollment: 1,700; Conf: Independent
Location: Loretto, Pa.; Rec: 13-12
Nickname: Frankies
Colors: Red/White
Lettermen Ret: 7; Starters: 5
Information: Ray Ponchione
(814) 472-7000
Series: First Game

FRESNO STATE (12-21-70) Logan
Coach: Ed Gregory (Pepperdine)
Athletic Dir: Cecil Coleman
Enrollment: 14,500; Conf: PCAC
Location: Fresno, Calif.; Rec: 14-12
Nickname: Bulldogs
Colors: Cardinal/Blue
Lettermen Ret: 4; Starters: Larry Henricksen, 6-5, Senior, Forward
Information: Ed Piston (487-2266)
Tom Kane (487-2266)
Series: 2-0; Last score: 76-64,
USU 1966-67

1970-71 OPPONENTS

ALL-COLLEGE TOURNAMENT (12-26/30-70) Oklahoma City

(Tournament of Champions - Each Team Participating is a Past Winner of the All-College Tourney - USU won in 1959)

Saturday, Dec. 26, 1970 - 7 p.m.
DePAUL UNIVERSITY - Chicago, Ill.
Coach: Ray Meyer (Notre Dame)
Enrollment: 10,240, Independent
Nickname: Blue Demons
Colors: Scarlet/Blue
Lettermen: 5 - 1969-70 Rec: 12-13
Starters Ret.: Joe Meyer
Information: John McCann
(312) 348-4340
USU-DePaul Series: No prior game

vs.

LOUISIANA STATE -Baton Rouge, La.
Coach: Press Maravich (Davis & Elkins '41)
Enrollment: 19,000
Conference: Southeastern
Nickname: Fighting Tigers
Colors: Purple/Gold
Lettermen: 4 1969-70
Rec: 1969-70, 22-10 (NIT)
Starters Ret.: 2-Al Sanders, Bill Newton
Information: Bud Johnson
(504) 388-2187
USU-LSU Series: No prior game

Saturday, Dec. 26, 1970 - 9 p.m.
MONTANA STATE UNIVERSITY -
Bozeman, Mont. (Page 25)
vs.

OKLAHOMA CITY UNIVERSITY -
Oklahoma City, Oklahoma
Coach: Abe Lemons (Okla. City)
Enrollment: 3,000; Independent
Nickname: Chiefs
Colors: Blue/White
Lettermen: 4 - 1969-70 Rec.: 17-13
Starters Ret.: John Nelson, Bob Hanes,
John Hoops, Jim Stuber
Honor Candidate: Norman Russell,
7-0, Center
Information: Bud Koper
(405) 525-5411
USU-OCU Series: 2-0,
Last Score: 80-71, 1961-62

Monday, Dec. 28, 1970 7 p.m.
WICHITA STATE UNIVERSITY -
Wichita, Kansas
Coach: Gary Thompson (Wich. '54)
Enrollment: 12,500
Conference: Missouri Valley
Nickname: Shockers
Colors: Gold/Black
Lettermen: 9, 1969-70 Rec: 8-18
Starters Ret: 2
Honor Candidate: Ron Smith, 7-2",
Junior, Center
Information: Conrad Downing
(316) 685-9161
USU-WSU Series: 4-3, Last score:
102-83, USU 1967-68

vs.

SAN FRANCISCO UNIVERSITY -
San Francisco, California
Coach: Phil Vukicevich (USF '53)
Enrollment: 5,000; Conf.: WCAC
Nickname: Dons; Colors: Green/gold
Lettermen: 7; 1969-70 Rec: 15-11
Starters Ret.: 4
Information: Mike Carey
(415) 752-1000
USU-USF Series: 1-6, Last score:
73-71, USF 1968-69

Monday, Dec. 28, 1970 - 9 p.m.
UTAH STATE UNIVERSITY -
vs.
BOWLING GREEN ST. UNIVERSITY -
Bowling Green, Ohio
Coach: Bob Conibear (Wayne St. '52)
Enrollment: 14,000
Conference: Mid-America
Nickname: Falcons
Colors: Orange/Brown
Lettermen: 4; 1969-70 Rec: 15-9
Starters Ret.: Rich Walker, 6-3, Sr.
Information: Bob Moyers
(419) 372-2401
USU-BGSU Series: First Meeting

DENVER (1-9-71) Logan
(2-15-71) Denver
Coach: Jim Karabetos (N. Mich.)
Ath. Director: Hoyt Brawner
Enrollment: 9,300; Conf: Independent
Location: Denver, Colo.
Nickname: Pioneers
Colors: Red/Gold
Lettermen Ret: 6; Starters: 2
Honor Candidate: Gary Sacheck, 6-7
1969-70 Record: 13-11
Information: Jim Landis (753-2339)
Series: 42-31; Last score: 78-73,
Denver, 1969-70

1970-71 OPPONENTS

MONTANA STATE (1-11-71) Boze-
man - (2-1-71) Logan
Coach: Gary Hulst (Colo. State)
Athletic Dir.: Tom Parac
Enrollment: 8,000; Conf: Big Sky
Location: Bozeman, Mont.
Nickname: Bobcats
Colors: Blue/Gold
Lettermen Ret: 4; Starters: 2
Honor Candidate: Bill Brickhouse 6-2
1969-70 Record: 4-22
Information: Ken Nicholson
(406) 587-4082
Series: 66-38; Last score: 86-76,
MSU 1968-69

SEATTLE (1-16-71) Logan
(2-13-71) Seattle
Coach: Morris Buckwalter (Utah)
Athletic Dir: Ed O'Brien
Enrollment: 3,400
Nickname: Chiefs
Colors: Scarlet/White
Lettermen Ret: 5; Starters: 2
1969-70 Record: 15-10
Information: Pat Hays
(206) 626-5305
Series: 8-7; Last score: 82-81,
USU 1969-70

AIR FORCE ACADEMY (1-30-71)
Air Force Academy
Coach: Bob Spear (DuPauw'41)
Athletic Dir: Col. Frank Merritt
Enrollment: 4,100; Conf: Independent
Location: Air Force Academy, Colo.
Nickname: Falcons
Colors: Silver/Blue
Lettermen Ret: 4; Starters: 2
Honor Candidate: Ron Weilert, 6-6
1969-70 Record: 12-12
Information: Hal Bateman
(303) 472-2313
Series: 2-1; Last score: 80-78,
USU, 1969-70

TULANE UNIVERSITY (2-8-71)
New Orleans
Coach: Ralph Pedersen (Tulane)
Athletic Dir: Dr. Rix N. Yard
Enrollment: 8,500; Conf: Independent
Location: New Orleans, La.
Nickname: Green Wave
Colors: Olive Green/Sky Blue
Lettermen Ret: 5; Starters: 2
Honor Candidates: John Sutter, 6-8
1969-70 Record: 5-18
Information: Bill Curl
(504) 861-8084
Series: First game

PORTLAND (1-14-71) Logan
Coach: Jack Avina (SJS '52)
Athletic Dir: Joe Etzel
Enrollment: 2,100; Conf: Independent
Location: Portland, Oregon
Nickname: Pilots
Colors: Purple/White/Red
Lettermen Ret: 8; Starters: 3
1969-70 Record: 4-22
Information: Mike Hope
(503) 286-7117
Series: 10-2; Last Score: 111-68,
USU 1969-70

LONG ISLAND UNIVERSITY
(1-25-71) Logan
Coach: Roy Rubin (Louisville '51)
Athletic Dir.: Roy Rubin
Enrollment: 7,600; Conf: Independent
Location: Brooklyn, New York
Nickname: Blackbirds
Colors: Blue/White
Lettermen Ret: 9; Starters: Jones
Honor Candidate: Walter Jones, 6-8
1969-70 Record: 16-9
Information: Bob Gesslein
(212) 834-6090
Series: 0-1; Last score: 56-38;
LIU 1946-47

NEW MEXICO STATE (2-6-71) Las
Cruces; (2-27-71) Logan
Coach: Lou Henson (N. M. St. '55)
Athletic Dir: Louis R. Henson
Enrollment: 11,000; Independent
Location: Las Cruces, N. M.
Nickname: Amazin' Aggies
Colors: Red, White/Columbia Blue
Lettermen Ret: 5; Starters: Smith
Honor Candidates: Jeff Smith, 6-8
1969-70 Record: 27-3
Information: Sonny Yates
(505) 646-3929
Series: 3-2; Last score: 104-92,
NMS 1969-70

WEBER STATE COLLEGE (2-23-71)
Logan
Coach: Phil Johnson (USU '63)
Athletic Dir: Dale L. Gardner
Enrollment: 11,000; Conf: Big Sky
Location: Ogden, Utah
Nickname: Wildcats
Colors: Purple/White
Lettermen Ret: 5; Starters: 3
Honor Candidate: Willie Sojourner
1969-70 Rec: 20-7
Information: Don Spainhower
(801) 394-8341
Series: First game

1969-70 SCORING-REBOUNDING

Game-by-Game

Site	USU	OPP	Roberts	Williams	Tollestrup	Jeppesen	Tebbs	Epps	Hatch	Erickson	Wakefield	Bees	Bean	Wade
H-113	Pepperdine	82	25-20	19-8	10-14	20-4	10-1	7-3	6-3	4-1	2-1	4-9	6-3	DNP
H-85	Sacramento	65	31-16	15-6	8-13	12-3	6-1	0-3	4-2	5-3	0-0	4-7	0-1	DNP
A-90	Utah	72	27-10	19-12	10-7	4-2	13-0	8-2	0-0	4-7	0-0	3-10	2-1	DNP
H-125	St. Peter's	108	34-20	45-15	9-10	11-5	11-4	3-1	7-2	5-2	0-0	0-6	DNP	DNP
H-112	West Texas	87	24-14	40-11	13-7	8-3	12-2	6-2	2-0	3-3	2-1	0-2	0-0	DNP
A-61	Washington	90	32-16	5-8	1-3	6-1	8-4	2-4	2-2	3-5	2-1	0-5	0-1	DNP
A-74	Wisconsin	81	17-15	19-12	7-5	12-5	5-4	14-2	DNP	0-2	0-0	DNP	DNP	DNP
A-80	Delaware	66	16-22	27-9	1-1	11-2	0-0	4-2	0-1	12-11	9-3	DNP	0-2	0-0
H-99	Cal State (LA)	86	DNP	DNP	24-12	16-7	2-1	DNP	29-7	12-10	12-2	DNP	2-3	2-2
H-105	Seattle	86	18-18	35-11	13-11	9-3	3-2	11-6	5-5	2-4	8-1	DNP	DNP	1-0
H-97	BYU	94	26-16	17-5	22-8	12-7	DNP	4-2	4-2	0-1	12-1	DNP	0-0	DNP
H-106	Utah	98	24-16	11-4	29-8	18-4	6-1	13-1	0-0	3-2	2-1	DNP	DNP	DNP
H-95	Portland	83	22-21	22-9	18-9	12-2	3-1	2-0	4-0	4-2	2-1	DNP	4-1	2-3
A-66	Colo. State	80	23-16	14-8	10-5	4-3	2-2	7-3	0-0	2-4	0-0	DNP	0-1	4-2
A-68	California	63	21-9	20-6	9-3	8-7	8-6	DNP	2-2	0-1	DNP	DNP	0-1	DNP
H-91	Houston	84	13-10	26-22	10-7	18-2	22-5	DNP	2-1	0-0	0-0	DNP	0-0	0-0
A-111	Portland	68	5-12	28-10	20-14	12-2	14-5	18-6	DNP	3-11	1-1	DNP	6-4	4-2
H-90	N. Mex. St.	95	22-8	22-9	13-5	26-5	7-0	DNP	DNP	DNP	0-0	DNP	DNP	0-0
H-104	Denver	77	12-8	14-5	5-5	4-6	5-1	14-6	26-6	10-6	10-3	DNP	0-1	4-0
H-112	Ariz. State	102	30-13	14-3	12-15	11-2	8-2	9-4	20-5	6-0	2-2	DNP	0-2	DNP
A-73	Denver	78	19-9	19-9	3-5	6-4	4-0	7-2	5-4	6-4	4-0	DNP	DNP	0-3
A-82	Seattle	81	13-8	24-14	13-5	14-6	3-2	9-2	2-0	4-3	DNP	DNP	DNP	DNP
H-80	Air Force	78	15-7	22-8	11-9	9-3	9-4	2-2	4-1	2-4	2-0	DNP	DNP	4-0
A-83	West Texas	73	23-13	11-9	10-10	4-2	17-1	4-1	12-3	0-0	2-1	DNP	DNP	DNP
A-92	N. Mex. St.	104	33-11	40-10	8-9	4-1	0-2	3-7	0-0	0-0	0-0	DNP	0-1	4-0
A-86	BYU	73	21-13	11-12	13-9	12-3	7-1	4-0	4-1	11-5	2-0	DNP	1-0	0-0
A-91	UTEP	81	30-16	31-10	14-9	4-3	1-4	0-0	7-2	2-0	2-0	DNP	0-0	0-0
A-69	Santa Clara	68	16-16	24-4	7-13	8-3	3-4	9-2	2-3	0-1	DNP	DNP	0-0	DNP
A-79	UCLA	101	33-15	14-11	6-10	12-1	0-2	12-6	2-2	0-0	0-0	DNP	0-1	0-1

* = Overtime
DNP = Did not play

1969-70 STATISTICS

Player Pos.	G	FG-FGA-%	FT-FTA-%	RB	Avg	PF-D	TP-Avg	Asst.	High
Roberts, F	28	239-515 .46	149-206 .72	388	13.9	83-3	627	22.4	85 34
Williams, F	28	246-518 .47	116-161 .72	260	9.3	104-7	608	21.7	52 45
Tollestrup, C	29	116-220 .51	97-127 .76	241	8.3	104-6	329	11.3	42 29
Jeppesen, G	29	120-251 .48	67-93 .72	101	3.5	97-5	307	10.6	115 26
Tebbs, G	28	65-164 .40	59-77 .77	62	2.2	77-2	189	6.7	98 22
Epps, G	25	66-143 .45	40-52 .77	69	2.8	45-3	172	6.9	38 18
Hatch, F	26	53-109 .53	35-44 .79	55	2.1	22-1	151	5.8	20 29
Ericksen, F	28	39-77 .51	25-35 .71	92	3.3	50-3	103	3.7	8 12
Wakefield, G	26	34-76 .45	8-10 .80	19	.7	28-0	76	2.9	21 12
Wade, G	15	11-20 .55	3-5 .60	13	.9	11-1	25	1.7	7 4
Bees, C	6	4-28 .14	3-9 .33	39	6.5	10-0	11	1.8	3 4
Bean, C	20	10-19 .53	1-6 .17	23	1.1	10-0	21	1.0	2 6

Team 204

USU Totals	29	1008-2153 .47	603-825 .73	1566	54.0	641-32	2619	90.3	491 125
OPP Totals	29	902-2172 .41	600-851 .70	1322	45.6	613-27	2404	82.9	108

Season Record: 22-7 Home: 13-1 Road: 9-6

GAME BY GAME LEADERS

USU	OPP	Att	Rebounds	FG	FT	Points
H-113 Pepperdine	82	5,296	Roberts 20	Roberts 9	Roberts 7	Roberts 25
H-85 Sacramento	65	5,343	Roberts 16	Roberts 12	Roberts 7	Roberts 31
A-90 Utah	72	15,121	Williams 12	Roberts 12	Roberts 7	Roberts 27
H-125 St. Peter's	108	5,296	Roberts 20	Williams 20	Roberts 8	Williams 45
						Roberts 34
H-112 West Texas	87	5,698	Roberts 14	Williams 16	Roberts 10	Williams 40
A-61 Washington	90	7,800	Roberts 16	Roberts 9	Roberts 14	Roberts 32
*A-74 Wisconsin	81	8,200	Roberts 15	Williams 8	Roberts 5	Williams 19
*A-80 Delaware	66	10,746	Roberts 22	Williams 13	Wakefield 5	Williams 27
H-99 Cal St. (L.A.)	86	4,863	Tilstrup 11	Hatch 10	Hatch 9	Hatch 29
H-105 Seattle	86	5,670	Roberts 10	Williams 13	Williams 9	Williams 35
H-97 BYU	94	5,725	Roberts 16	Roberts 11	Tilstrup 10	Roberts 26
H-106 Utah (OT)	98	5,623	Roberts 16	Roberts 10	Tilstrup 17	Tilstrup 29
H-95 Portland	83	4,923	Roberts 21	Williams 10	Tilstrup 6	Roberts 22
						Williams 22
A-66 Colo. State	80	5,475	Roberts 16	Roberts 8	Roberts 7	Roberts 23
A-68 California (OT)	63	6,200	Roberts 9	Williams 9	Roberts 11	Roberts 21
H-91 Houston	84	5,374	Williams 22	Williams 12	Tebbs 6	Williams 26
A-111 Portland	68	797	Tilstrup 14	Williams 12	Epps 6	Williams 28
H-90 N. Mexcio State	95	5,747	Williams 9	Jeppesen 10	Williams 10	Jeppesen 26
H-104 Denver	77	5,347	Roberts 8	Hatch 11	Hatch/Epps 4	Hatch 26
H-112 Arizona State	102	5,455	Tilstrup 15	Roberts 11	Roberts 8	Roberts 30
A-73 Denver	78	1,117	Rbrts/Wilms 9	Williams 9	Roberts 5	Rbrts/Wilms 19
A-82 Seattle	81	2,400	Williams 14	Williams 8	Williams 8	Williams 24
H-80 Air Force	78	5,618	Tilstrup 9	Williams 7	Williams 8	Williams 22
A-83 West Texas	73	3,600	Roberts 13	Roberts 11	Williams 7	Roberts 23
A-92 N. Mexico State	104	13,111	Roberts 11	Williams 15	Williams 10	Williams 40
A-86 BYU	73	11,020	Roberts 13	Roberts 10	Tilstrup 3	Roberts 21
*A-91 UTEP	81	10,403	Roberts 16	Williams 14	Roberts 8	Williams 31
#A-69 Santa Clara	68	5,400	Roberts 16	Williams 10	Roberts 6	Williams 24
#A-79 UCLA	101	4,200	Roberts 15	Roberts 14	Roberts 5	Roberts 33

2,619 2,404 181,568 Avg. 6,261

* Milwaukee Classic

**NCAA at-large at BYU

NCAA West Regional at U. Washington, Seattle

USU ATHLETIC DIRECTORY

Location — Logan, Utah (Pop. 24,500) (AC 801 752-4100)
 Cache County (Pop. 44,000)
 Elevation — Logan 4,504 ft., USU Campus 4,785 ft.
 Enrollment — 8,700
 Founded — March 8, 1888
 President — Dr. Glen L. Taggart
 Faculty Representative — Norm Jones (Ex. 7259)
 Athletic Director — Frank "Buss" Williams (Ex. 7501)
 Asst. Athletic Director — Norvel Hansen (Ex. 7502)
 Head Basketball Coach — LaDell Andersen (Ex. 7506)
 Head Football Coach — Chuck Mills (Ex. 7503)
 Track Coach — Ralph Maughan (Ex. 7505)
 Westling Coach — Bob Carlson (Ex. 7505)
 Tennis Coach — Dutch Belnap (Ex. 7506)
 Golf Coach — Dean Candland (752-8722)
 Equipment Supervisor — Ken Seamons (Ex. 7501)
 Colors — Navy Blue and White
 Nickname — Aggies, State, Big Blue, Utags
 Conference — NCAA Independent
 Stadium — E. L. "Dick" Romney (20,000)
 Fieldhouse — USU Assembly Center (10,200)
 Physical Plant —
 (Stadium/Fieldhouse) Harold Wadsworth (Ex. 7671)
 Trainer — Dick Melhart (Ex. 7505)
 Ticket Manager — Tom Moulton (Ex. 7141)
 QB Club Secretary — Larry Anderson (752-0911)
 Sports Information — Ken Mitchell (Ex. 7437)
 (Home phone 752-2466)

Athletic Associates

Since 1947 the USU athletic program has had the support of an active booster organization which provides financial and moral support to State athletic teams.

Founded originally as a Buck-O-Month Club, the group became the Quarterback Club in 1955 and is now known as the USU Athletic Associates.

OFFICERS

Brent Hoggan, Logan, President of Athletic Associates
 Larry Anderson, Logan, Treasurer
 Nog Hansen, Logan, Secretary
 Serge Benson, President of Logan Chapter
 Harrison Miller, President of Tremonton Chapter
 Max Baty, President of Brigham City Chapter
 Howard Nielsen, President of Ogden Chapter
 Harvey Kirkpatrick, President of Salt Lake City Chapter
 Jerry Wilson, President of Southern California Chapter

1970-71 FRESHMEN

ALLRED, DALE, Guard, 6-4, 175, Uintah High, Vernal, Utah. All-State and Most Inspirational Player at Uintah - state high jump champion with a leap of 6'7" - aggressive, good outside shot - civil engineering major - son of Mr. and Mrs. Glen E. Allred - born 6-7-52.

BLACK, ROLAND, Guard, 6-1, 160, Spanish Fork High, Salem, Utah. Made the team on a try-out - voted most valuable player at SFH - all-region and player-of-the-week honors - physical education major - son of Mr. and Mrs. Guss Black - born 10-24-51.

BAUGH, KENT, Guard, 6-2, 165, Logan High, Logan, Utah. Very quick and a good ball handler - starter last year at the Air Force Academy prep school - also lettered in baseball and football at Logan High - engineer-ing major - son of Mr. and Mrs. Dean Baugh - born 3-6-51.

BOATWRIGHT, JIM, Forward-Center, 6-8, 205, Minico High, Rupert, Idaho. One of the most sought after players to ever play in Idaho - played in "Dapper Dan" game in Pittsburgh - all-state two years and Prep All-America last year - scored 43 points in one game last year - real tough under the basket and a good shooter - major undecided - son of Mr. and Mrs. Bill Boatwright - born 12-10-51.

DRESSEN, DAN, Center, 6-7, 200, West High, Salt Lake City, Utah. outstanding rebounder - good medium range shot - determined player - married (Pat) one child (Tricia) - business major - son of Mr. and Mrs. E. H. Dessen - born 2-8-52.

ERICKSON, GARY, Guard-Forward, 6-3, 175, West High, Salt Lake City, Ut. Broke all of Rick Miller's scoring records for the state of Utah - the most recruited athlete in the state last year - all-state and All-America honors along with the MVP ward for Utah - an excellent shooter - major undecided - son of Mrs. LuJean Erickson - born 6-24-52.

HANSEN, GLEN, Forward, 6-5, 185, Grand Forks, North Dakota, Central High School - set prep scoring records in state of North Dakota - all-city, all-conference, all-state, and honorable mention All-America last year - also lettered in football and track - major undecided - son of Mr. and Mrs. Robert J. Hansen - born 4-21-52.

JOHNSON, SHAWN, Forward, 6-5, 200, South High, Salt Lake City, Utah. Defensive specialist - scores well inside and can rebound - major undecided - son of Mr. and Mrs. G. Keith Johnson - born 7-29-52.

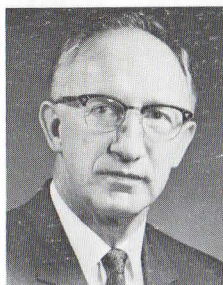
MATTHEWS, NEAL, Guard, 5-11, 160, Sky View High, River Heights, Utah. All-region and week's prep last year - quick with a good vertical jump - drives to the basket very well - political science major - son of Mr. and Mrs. Doyle S. Matthews - born 11-18-51.

McKEE, REX, Center, 6-9, 180, Bingham High, Copperton, Utah. Played tennis in high school which shows remarkable agility for big man - good hook shot from medium range - undecided major - son of Mr. and Mrs. Norman McKee - born 6-13-52.

PALLEY, DAN, Guard, 6-3, 175, Berkeley High, Berkeley, California. Extremely quick - an excellent passer - broke records for the assists at Berkeley High - all-metropolitan honors - teammate of Pat Cooley two years ago - physical education major - sociology minor - son of Mr. and Mrs. Marshall Palley - born 5-16-52.

PECK, ARTHUR, forward, 6-6, 195, Olympus High, Salt Lake City, Utah. Starting lineman on the Olympus football team, winning lineman-of-week-honor on three occasions - had a game high of 29 points last year - good shooter from the corner - civil engineering major - son of Mr. and Mrs. Arthur J. Peck - born 12-29-51.

University President



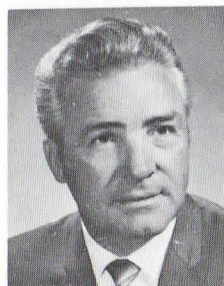
DR. GLEN L. TAGGART

Dr. Glen L. Taggart, the 11th president of Utah State University, began his duties at USU on July 1, 1968.

A 1940 graduate of the University, Dr. Taggart formerly served as dean of International Studies and Programs at Michigan State University. He had held that position since 1956, except for a leave of absence from 1964 through 1966 when he served as vice-chancellor (president) of the University of Nigeria.

Dr. Taggart joined the Michigan State faculty as professor of sociology in 1953. Prior to that time he had been in government service as rural sociologist for the Bureau of Agricultural Economics, U.S. Department of Agriculture (1943-44), as social scientist (1944-49), assistant chief (1950-52) and chief (1952-53), Technical Collaboration Division, Foreign Agricultural Service of the USDA.

Director of Athletics



FRANK "BUSS" WILLIAMS

For many years Frank "Buss" Williams carried the State colors as a player and coach. This year Williams is in his seventh year as director of athletics since being named to the position in 1964.

A native of Utah, Williams received his bachelors degree from Utah State in 1948 and the masters in 1956 also at USU.

Williams was all-Skyline conference fullback for the State teams of 1946 and 1947. For three years he won the Skyline wrestling championships in his weight division and in 1946 Williams placed sixth in the discus in the NCAA championships.

After graduation Williams played professional football one year each with the New York Giants and Green Bay Packers.

Williams began his coaching career in Montana where he coached football and wrestling at Helena, Billings and Great Falls for ten years.

In 1960-63 Williams returned to USU to coach freshman football, wrestling and baseball.

For one year, 1963-64, Williams served on the coaching staff at Stanford University with former State head coach John Ralston.

Since taking administrative responsibilities at USU a new football stadium has been completed and a basketball arena is nearing completion.

Williams has nailed down football schedules which include all the traditional opponents plus the addition of the nation's powers; Texas, Oklahoma, Memphis State, Florida State and Kansas State to name a few.

The recent addition of Weber State to the football and basketball schedules indicates the ability of Williams to develop the type of programs that residents of Utah want in the state's athletic programs.

UTAH STATE UNIVERSITY

Utah State University was founded March 8, 1888 as part of the great family of colleges and universities known as land-grant institutions. The University first opened its educational doors on September 5, 1890 as an agricultural college.

However, today agriculture is only one of eight resident colleges within the rapidly expanding campus.

Eight Colleges

The University started the 80th year of educational work in the fall of 1970 offering work in the colleges of agriculture, business, education, engineering, family life, natural resources, sciences and humanities, arts and social sciences. A total of 54 academic departments are available to State students.

Growing with the pace experienced by most major educational institutions today, Utah State's graduate school offers the masters degree in nearly every subject taught at the institution and the doctorate degree is offered in some 29 major fields of study.

Progress

Today, after three-quarters of a century, Utah State projects a panorama of progress that would have astounded its pioneer founders and gives promise of even greater advancements to come. The raw campus which originally consisted of one simple building is now clothed in green lawns and spreading trees, the first building has been joined by 100 more, the initial nine-man faculty has grown to over 650 and the first student body of 22 has swelled to approximately 9,000.

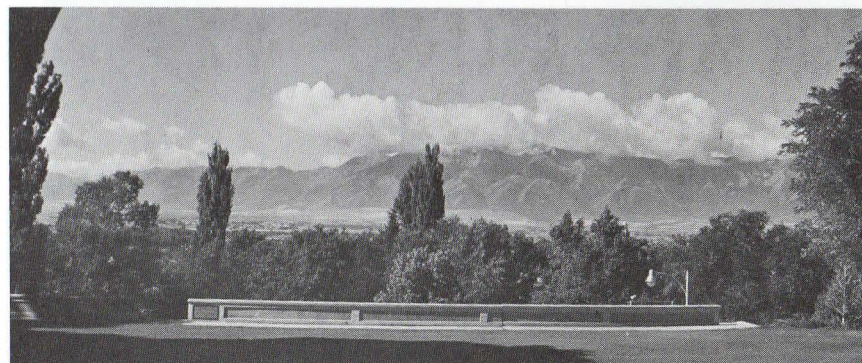
Campus

The cosmopolitan student body includes students attracted from throughout the nation and the world. The spacious Logan campus, located on a picturesque 4,785-foot bench against the towering Wasatch Mountain range in northern Utah's Cache Valley, contains more than 260 acres.

Building

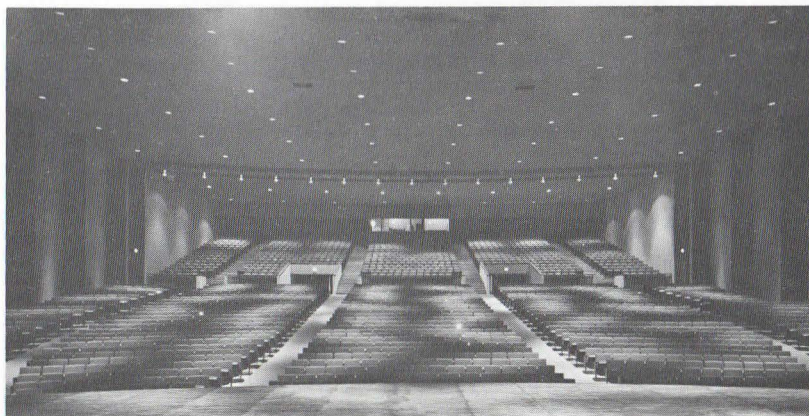
The University at present is in the midst of the largest building program in its history, with \$20-million being spent at USU on buildings which will provide needed expansion of classroom and research facilities and will enable the University to meet more adequately the needs of the enrollment.

Among the new structures recently completed, now under construction, or planned for the near future, are buildings for chemistry, business, veterinary science-bacteriology, physical education, fine arts, industrial education, a library, an experiment station, high-rise residence halls, food service buildings, a new stadium and an assembly center.



FROSH SCHEDULE

Date	Opponent	Time
Tue. Dec. 1	— Western Wyoming at Logan	5:45
Wed. Dec. 2	— Southern Utah State at Logan	5:45
Sat. Dec. 5	— University of Utah at Logan	5:45
Mon. Dec. 7	— Utah State Alumni at Logan	5:45
Thurs. Dec. 10	— N. W. Community College, L	5:45
Sat. Dec. 12	— Idaho State University at Logan	5:45
Sat. Dec. 19	— B.Y.U. at Provo	5:45
Sat. Jan. 9	— Snow Junior College at Logan	5:45
Tues. Jan. 12	— Southern Utah State at Cedar	8:00
Thurs. Jan. 14	— Treasure Valley at Logan	5:45
Sat. Jan. 16	— Treasure Valley at Logan	5:45
Thurs. Jan. 21	— University of Utah at SLC	5:45
Sat. Jan. 23	— B.Y.U. at Logan	5:45
Mon. Jan. 25	— College of Southern Idaho, L	5:45
Sat. Jan. 30	— Weber State College at Ogden	5:45
Mon. Feb. 1	— University of Utah at Logan	5:45
Wed. Feb. 10	— College of Southern Idaho at Twin Falls	8:00
Sat. Feb. 13	— Idaho State University at Pocatello	5:45
Tues. Feb. 23	— Weber State College at Logan	5:45
Sat. Feb. 27	— Rangely Junior College, L	5:45



AGGIE BASKETBALL RECORDS

Career Points

Over 2000

WAYNE ESTES - 2001 in 75 games
26.7 average*

	FG	FTA	FTM	TP	
1962-63	205	154	129	539	27 games
1963-64	309*	238	203	821*	29 games
1964-65	252	156	137	641	19 games
	766*	548	469	2001*	75 games

Over 1000

CORNELL GREEN - 1890 in 84 games
22.5 average

	FG	FTA	FTM	TP	
1959-60	225	266	165	615	29 games
1960-61	188	245	154	530	26 games
1961-62	259	324*	227*	745	29 games
	672	835*	546*	1890	84 games

MARVIN ROBERTS - 1345 in 54 games,
24.9 Average

	FG	FTA	FTM	TP	
1968-69	271	176	255	718	26 games
1969-70	239	149	206	627	28 games
	510	325	461	1345	54 games

SHALER HALIMON - 1284 points in 51
games, 25.2 average

	FG	FTA	FTM	TP	
1966-67	247	167	119	613	26 games
1967-68	256	215	159	671	25 games
	503	382	278	1284	51 games

MAX PERRY - 1236 in 79 games,
15.6 average

	FG	FTA	FTM	TP	
1958-59	140	89	67	347	26 games
1959-60	189	115	90	468	29 games
1960-61	176	99	69	421	26 games
	505	203	126	1236	79 games

BERT COOK - 1133 points in 63 games
17.9 average

	FG	FTA	FTM	TP	
1950-51	193	260	203	589	34 games
1951-52	187	213	170	544	29 games
	380	473	373	1133	63 games

TROY COLLIER - 1109 in 56 games,
19.8 average

	FG	FTA	FTM	TP	
1962-63	200	149	93	493	27 games
1963-64	240	203	136	616	29 games
	440	252	229	1109	56 games

PAT DUNN - 1018 points in 68 games,
14.9 average

	FG	FTA	FTM	TP	
1953-54	81	93	66	228	20 games
1954-55	106	124	97	309	22 games
1955-56	184	146	103	481	26 games
	371	363	266	1018	68 games

BILL HULL - 1007 points in 79 games,
12.7 average

	FG	FTA	FTM	TP	
1951-52	106	98	64	276	25 games
1952-53	165	164	115	445	29 games
1953-54	105	111	76	286	25 games
	376	373	255	1007	79 games

BOB IPSEN - 1001 points in 50 games,
20.0 average

	FG	FTA	FTM	TP	
1957-58	154	183	124	432	24 games
1958-59	221	182	127	569	26 games
	375	365	251	1001	50 games

*School Record

GEORGE NELSON FIELDHOUSE

Utah State's Aggies will move into the new USU Assembly Center this season but the history of USU basketball remains in the historical Nelson Fieldhouse for the moment.

The Aggies left "Doc" Nelson with one of the greatest come-from-behind victories ever recorded. In the final game of the home schedule for 1970 USU caught the Air Force Academy at the gun to win, 80-78.

George Nelson Fieldhouse was constructed in 1939 through the co-operation of the State of Utah, the Federal Public Works Administration and a group of public spirited citizens who initiated the project in the interest of the public.

NELSON, SINGLE GAME RECORDS

- *6,655 -- University of Utah, 1959
- 6,514 -- University of Utah, 1962
- 6,511 -- University of Utah, 1960
- 6,356 -- Brigham Young University, 1963
- 6,336 -- Brigham Young University, 1962
- 6,302 -- Brigham Young University, 1960
- 6,268 -- Ohio State University, 1964
- 6,210 -- Colorado State University, 1960
- 6,195 -- University of Utah, 1966

*Record Crowd - City Fire Chief has since regulated capacity seating to 5,500.

NELSON, SEASON RECORDS

Year	Games	Attendance	Average
1958-59	11	46,959	4,269
1959-60	10	53,803	5,380
1960-61	11	53,135	4,830
1961-62	13	67,680	5,206
1962-63	13	59,589	4,584
1963-64	14	75,085	5,363
1964-65	13	70,820	5,448*
1965-66	14	70,612	5,044
1966-67	18	85,745*	5,044
1967-68	13	65,420	5,032
1968-69	12	56,313	4,693
1969-70	14	75,978	5,427

* Records

HOME - ROAD RECORD, MILES TRAVELED

Year	Home	Road	Miles
1958-59	10-1	9-6	9,300
1959-60	9-1	15-4	11,000
1960-61	8-3	4-11	14,632
1961-62	11-2	11-5	9,000
1962-63	12-1	8-6	11,977
1963-64	13-1	8-7	12,584
1964-65	10-3	3-9	14,739
1965-66	8-6	4-8	8,777
1966-67	17-1	5-5	13,216
1967-68	10-3	4-8	10,470
1968-69	7-5	3-12	18,725
1969-70	13-1	9-6	15,899

Aggies Individual. Single Game

POINTS:

- 52 - Wayne Estes against Boston College, Dec. 30, 1964, at Honolulu.
- 48 - Wayne Estes against Denver, Feb. 8, 1964, at Logan.
- 47 - Shaler Halimon against Brigham Young, Jan. 6, 1968, at Provo.
- 46 - Cornell Green against New Mexico, Mar. 3, 1962, at Albuquerque.
- 45 - Max Perry against New Mexico, Mar. 3, 1961, at Logan.
- 45 - Nate Williams against St. Peter's, Dec. 8, 1969, at Logan.

FIELD GOALS:

- 21 - Wayne Estes against Boston College, Dec. 30, 1964, at Honolulu.
- 20 - Max Perry against New Mexico, Mar. 3, 1961, at Logan.
- 20 - Nate Williams against St. Peter's, Dec. 8, 1969, at Logan.
- 19 - Marv Roberts against West Texas St., Jan. 25, 1969, at Logan.

FIELD GOALS ATTEMPTED:

- 38 - Wayne Estes against Brigham Young, Feb. 6, 1965, at Provo.
- 37 - Shaler Halimon against Creighton, Jan. 14, 1967, at Logan.
- 36 - Shaler Halimon against Creighton, Jan. 14, 1967, at Logan.
- 36 - Shaler Halimon against BYU, Feb. 4, 1967, at Logan.
- 35 - Marv Roberts vs. Seattle, Dec. 5, 1968 at Logan.
- 35 - Marv Roberts vs. UCLA, Mar. 14, 1970 at Seattle.

REBOUNDS:

- 28 - Wayne Estes against Regis College, Dec. 15, 1962, at Logan.
- 27 - Jerry Schofield against Pacific, Dec. 19, 1959, at Logan.
- 25 - Wayne Estes against Colorado State U. Jan. 24, 1964, at Logan.
- 25 - Wayne Estes against Pacific, Dec. 7, 1964, at Logan.

FIELD GOAL PERCENTAGE (10 or more attempts):

- .846 - Ron Hatch (11-13) vs. Denver, Feb. 14, 1970, at Logan.
 - .846 - Marvin Roberts (11-13) vs. West Texas, Feb. 26, 1970, Amarillo, T.
 - .818 - Hal Hale against Montana State (9 of 11) Feb. 5, 1966 at Bozeman
- Special Note: Les Powell successfully made 15 consecutive field goal attempts over a period of four games from Jan. 16-28, 1967.

FREE THROWS:

- 18 - Wayne Estes against American U, Feb. 29, 1964, Fort Myer, Virginia.
- 17 - Bart Johnson against Idaho Dec. 11, 1954 at Moscow, Idaho.
- 16 - Wayne Estes against Regis College Dec. 15, 1962, at Logan.
- 16 - Wayne Estes against Texas A & M, Dec. 10, 1963 at Logan.

FREE THROWS ATTEMPTED:

- 25 - Marvin Roberts vs. Washington, Dec. 13, 1969, at Seattle.
- 20 - Cornell Green against Loyola (Calif.) Dec. 8, 1961, at Logan.

FREE THROW PERCENTAGE: (10 or more attempts)

- 1.000 - Larry Angle 13 of 13 against Denver Feb. 26, 1966, at Denver.
 - 1.000 - Larry Bunce 13 of 13 against Providence Dec. 17, 1966, at Logan.
 - 1.000 - Ted Smith 11 for 11 against Gonzaga Dec. 7, 1955, at Spokane.
 - 1.000 - Max Perry 11 for 11 against BYU Feb. 13, 1960, at Provo.
 - 1.000 - Troy Collier 11 for 11 against Montana Jan. 18, 1964, at Missoula.
- Special Note: Wayne Estes successfully made 42 consecutive free throw attempts over a period of seven games from Dec. 4-21, 1964.

ASSISTS: 11, Jeff Tebbs vs. Houston, Jan. 31, 1970, Logan.

INTERCEPTIONS/RECOVERIES:

- 7 - Nate Williams vs. Santa Clara, Mar. 12, 1970, Seattle.

BLOCKED SHOTS:

- 4 - Walter Bees vs. Utah, Dec. 6, 1970, Salt Lake City.

Aggies Thirty-Plus Club

50 POINTS OR MORE:

- 52 - Wayne Estes vs. Boston College, Dec. 30, 1964, at Honolulu.

45 POINTS OR MORE:

- 48 - Wayne Estes vs. Denver, Feb. 8, 1964, at Logan.
 47 - Shaler Halimon vs. Brigham Young, Jan. 6, 1968, at Provo.
 46 - Cornell Green vs. New Mexico, Mar. 3, 1962, at Albuquerque.
 45 - Max Perry vs. New Mexico, Mar. 3, 1961, at Logan.
 45 - Nate Williams vs. St. Peter's, Dec. 8, 1969 at Logan.

40 POINTS OR MORE:

- 43 - Wayne Estes vs. Utah, Jan. 30, 1965, at Logan.
 43 - Marv Roberts vs. West Texas State, Jan. 25, 1969 at Logan.
 43 - Marv Roberts vs. Montana State, Feb. 10, 1969 at Bozeman.
 42 - Wayne Estes against American U. Feb. 29, 1964, at Fort Myer, Va.
 42 - Shaler Halimon vs. Brigham Young, Feb. 4, 1967, at Logan.
 41 - Wayne Estes against Texas A & M, Dec. 10, 1963, at Logan.
 40 - Wayne Estes vs. Ohio State, Dec. 28, 1963, at Logan.
 40 - Wayne Estes vs. Nevada, Dec. 14, 1964, at Logan.
 40 - Marv Roberts vs. BYU, Jan. 30, 1969 at Provo.
 40 - Nate Williams vs. West Texas, Dec. 11, 1969 at Logan.
 40 - Nate Williams vs. New Mexico State, Feb. 28, 1970 at Las Cruces.

35 POINTS OR MORE:

- 39 - Shaler Halimon; Marv Roberts
 38 - Wayne Estes; Shaler Halimon
 37 - Wayne Estes (three times); Ted Smith; LeRoy Walker; Jimmy Smith
 36 - Bob Ipsen (twice)
 35 - Wayne Estes (three times); Cornell Green, Jimmy Smith (twice);
 Shaler Halimon (twice); Marv Roberts (twice); Nate Williams

30 POINTS OR MORE:

- 34 - Cornell Green (twice); Wayne Estes (twice); Bill Hull; Paul Hoffman;
 Marv Roberts (twice)
 33 - Shaler Halimon (three times); Wayne Estes (twice); LeRoy Walker
 (twice); Bart Johnson; Ted Smith; Jimmy Smith; Marv Roberts(2)
 32 - Wayne Estes (twice); Jerry Schofield; Cornell Green; Shaler Halimon;
 Paul Hoffman; Marv Roberts (twice)
 31 - Cornell Green (four times); Shaler Halimon (four times); Bart
 Johnson (twice); Wayne Estes (twice); Bert Cook; Dennis O'Brien;
 Marv Roberts (three times); Nate Williams
 30 - Cornell Green (twice); LeRoy Walker (twice); Darnel Haney; Troy
 Collier; Wayne Estes; Shaler Halimon; Marv Roberts (twice)

Aggies Team. Single Game

POINTS:

- 125 - Against American U., Feb. 29, 1964 at Fort Myer, Virginia.
 125 - Against St. Peter's, Dec. 8, 1969, at Logan.
 124 - against Creighton, Jan. 14, 1967, at Logan.
 118 - against Boston College, Dec. 30, 1964, at Honolulu
 116 - against Evansville, Dec. 11, 1967, at Logan
 115 - against New Mexico State, Dec. 20, 1963, at Logan.

BOTH TEAMS' POINTS:

- 238 - USU 118, Boston College 120 (OT), Dec. 30, 1964, at Honolulu
 233 - USU 123, St. Peter's 108, Dec. 8, 1969, at Logan
 229 - USU 106, Wichita 123, Dec. 23, 1966, at Wichita
 221 - USU 103, Brigham Young 118, Feb. 1, 1968, at Logan
 220 - USU 124, Creighton 96, Jan. 14, 1967, at Logan

FIELD GOALS:

- 52 - against American U., Feb. 29, 1964, at Fort Myer, Va.
 49 - against Loyola (Calif.), Dec. 9, 1966, at Logan

FIELD GOAL PERCENTAGE:

- .625 - 25 of 40 against New Mexico, Mar. 2, 1967, at Logan
 .623 - 33 of 53 against New Mexico State, Feb. 7, 1970, at Logan
 .620 - 31 of 50 against Washington, Dec. 7, 1968
 .615 - 40 of 65 against Wyoming, Nov. 30, 1968
 .600 - 39 of 65 against Colorado State, Jan. 17, 1959, at Fort Collins
 .600 - 39 of 65 against Cal. State, Jan. 5, 1970, at Logan

FREE THROWS MADE:

- 44 - against New Mexico, March 3, 1961 at Logan
 42 - against Cal. State, Dec. 20, 1960 at Logan

FREE THROWS ATTEMPTED:

- 51 - against Brigham Young, Feb. 1, 1968, at Logan
 47 - against Montana, Jan. 21, 1955, at Logan

FREE THROW PERCENTAGE:

- .920 - 13 of 14 against Minnesota, Dec. 19, 1964, at Minneapolis
 .913 - 21 of 23 against Pacific, Dec. 29, 1955 at Owensboro, Ky.
 .905 - 19 of 21 against Air Force Academy, Jan. 10, 1964 at Logan

FREE THROWS MADE (BOTH TEAMS):

- 76 - USU 42, Los Angeles State 34, Dec. 20, 1960, at Logan
 76 - USU 44, New Mexico 32, Mar. 3, 1961, at Logan

FREE THROWS ATTEMPTED (BOTH TEAMS):

- 103 - USU 45, Idaho 58, Dec. 11, 1954, at Moscow, Idaho

REBOUNDS:

- 82 - against Loyola (Calif.), Dec. 5, 1964, at Logan.
 78 - against Pepperdine, Dec. 1, 1970 at Logan
 77 - against Evansville, Dec. 11, 1967, at Logan
 76 - against Nevada, Dec. 14, 1964, at Logan

PERSONAL FOULS (BOTH TEAMS):

- 68 - USU 34, Denver 34, Jan. 29, 1949 at Denver
 65 - USU 42, Wyoming 23, Dec. 13, 1968 at Logan

ASSISTS:

- 30 - against West Texas, Dec. 11, 1969, at Logan

INTERCEPTIONS/RECOVERIES:

- 16 - against Portland, Feb. 3, 1970 at Portland

BLOCKED SHOTS:

- 7 - against Washington, Dec. 13, 1970, at Seattle

Aggies Individual Season

POINTS:

821 - Wayne Estes in 29 games, 1963-64
745 - Cornell Green in 29 games, 1961-62
718 - Marv Roberts in 26 games, 1968-69
671 - Shaler Halimon in 25 games, 1967-68
641 - Wayne Estes in 19 games, 1964-65
627 - Marv Roberts in 28 games, 1969-70

AVERAGE PER GAME:

33.7 - Wayne Estes in 19 games, 1964-65
28.3 - Wayne Estes in 29 games, 1963-64
27.6 - Marv Roberts in 26 games, 1968-69
26.8 - Shaler Halimon in 25 games, 1967-68
25.6 - Cornell Green in 29 games, 1961-62

FIELD GOALS:

309 - Wayne Estes in 29 games, 1963-64
271 - Marv Roberts in 26 games, 1968-69
259 - Cornell Green in 29 games, 1961-62
256 - Shaler Halimon in 25 games, 1967-68
252 - Wayne Estes in 19 games, 1964-65

FIELD GOAL PERCENTAGE:

.587 - Les Powell in 26 games, 1966-67
.535 - Troy Collier in 29 games, 1963-64
.528 - Troy Collier in 27 games, 1962-63
.508 - Tim Tollestrup, 29 games, 1969-70

FREE THROW PERCENTAGE:

.878 - Wayne Estes (137 of 156) in 19 games,
1964-65
.858 - Larry Bailey (78 of 92) 22 games 56-57
.853 - Wayne Estes (203-238) 29 games 63-64

REBOUND AVERAGE:

13.9 - Marvin Roberts, 28 games 1969-70
13.8 - Cornell Green in 29 games 1959-60
13.7 - Wayne Estes in 19 games 1964-65
13.0 - Wayne Estes in 29 games 1963-64

ASSISTS:

115 - Paul Jeppesen, 29 games, 1969-70

BLOCKED SHOTS:

11 - Walter Bees, 6 games, 1969-70

FREE THROWS:

227 - Cornell Green, 29 games, 1961-62
227 of 324 attempts
203 - Bert Cook in 34 games, 1950-51
203 of 260 attempts
203 - Wayne Estes, 29 games, 1963-64
203 of 238 attempts

REBOUNDS:

403 - Cornell Green, 29 games, 1959-60
388 - Marv Roberts, 28 games, 1969-70
377 - Wayne Estes, 29 games, 1963-64
357 - Troy Collier, 29 games, 1963-64

INTERCEPTIONS/RECOVERIES:

53 - Paul Jeppesen, 29 games, 1969-70

Aggies Team Season

POINTS:

2,619 - 29 games, 1969-70

SCORING AVERAGE:

90.3 - 29 games, 1969-70

FIELD GOALS:

1,008 - 29 games, 1969-70

FIELD GOAL PERCENTAGE:

.468 - 1008 of 2153, 29 games, 1969-70

FREE THROWS:

672 - 30 games, 1952-53

FREE THROWS ATTEMPTED:

886 - 30 games, 1952-53

FREE THROW PERCENTAGE:

.731 - 603 of 825, 29 games, 1969-70

REBOUNDS:

1,566 - 29 games, 1969-70

REBOUND AVERAGE:

54.0 - 29 games, 1969-70

WINS IN SINGLE SEASON:

24 - 24-5, 1959-60

HIGHEST WIN PERCENTAGE vs NCAA OPP

.828 - 24-5, 1959-60
.769 - 20-6, 1966-67
.759 - 22-7, 1961-62
.759 - 22-7, 1969-70

CONSECUTIVE CONFERENCE WINS:

(SKYLINE)

10 - 1959-60

CONSECUTIVE WINS:

12 - 1959-60

ASSISTS:

491 - 29 games, 1969-70

INTERCEPTIONS/RECOVERIES:

200 - 29 games, 1969-70

BLOCKED SHOTS:

53 - 29 games, 1969-70

Opponents Individual. Single Game

POINTS:

- 43 - by Art Bunte of Utah vs. Utah St.
Jan. 14, 1955, at Salt Lake City
- 43 - by John Austin of Boston College vs Ut.
State, Dec. 30, 1964 at Honolulu
- 41 - by Tom Little of Seattle vs. Ut. State
Dec. 5, 1968 at Logan

FIELD GOALS:

- 19 - by Tom Little of Seattle vs. Utah State
Dec. 5, 1968 at Logan
- 17 - by Craig Raymond of Brigham Young vs
Utah State Jan. 6, 1967 at Provo

REBOUNDS:

- 29 - by Keith Swagerty of Pacific vs Utah
State, Dec. 7, 1964 at Logan

FREE THROWS:

- 18 - by Joe Capua of Wyoming vs Utah State
Feb. 17, 1956, at Logan

FREE THROWS ATTEMPTED:

- 21 - by Joe Capua of Wyoming vs Utah State
Feb. 17, 1956 at Logan

Opponents Team. Single Game

POINTS:

- 127 - by Utah vs Utah State, Feb 12, 1966,
at Salt Lake City

FIELD GOALS:

- 56 - by Utah vs. Utah State, Feb. 12, 1966
at Salt Lake City

REBOUNDS:

- 90 - by BYU, Jan. 6, 1968, at Provo

FREE THROWS:

- 40 - by Montana State, Dec. 21, 1956 at
Bozeman

FREE THROWS ATTEMPTED:

- 58 - by Idaho, Dec. 11, 1954, at Moscow

FREE THROW PERCENTAGE:

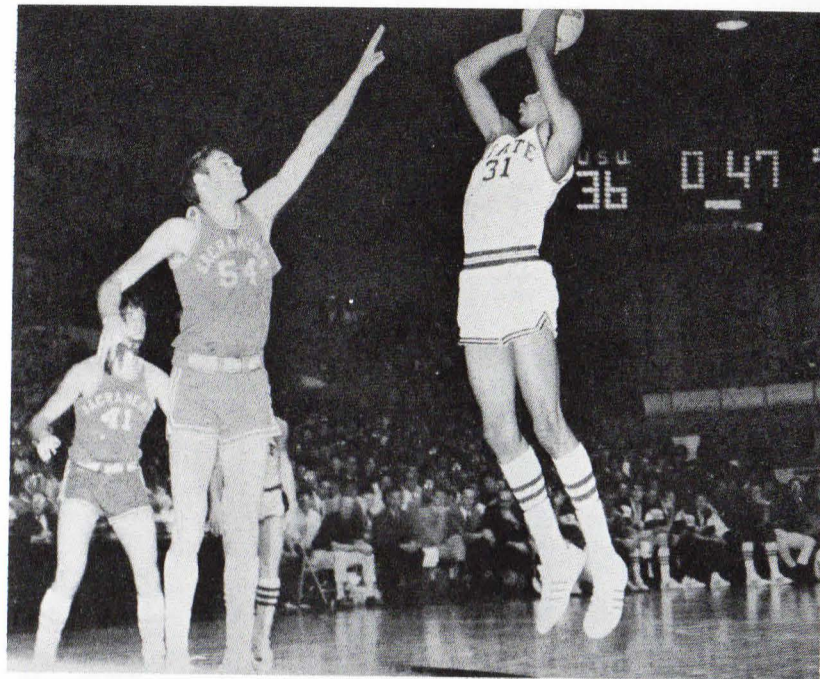
- .871 - by BYU (27 of 31) Jan 9, 1965, at
Logan

AGGIES vs. OPPONENTS

OPPONENT	W	L	First Game
Air Force Academy	2	1	1962-63
American	2	0	1963-64
American International	1	0	1946-47
Arizona	3	0	1938-59
American Athletes In Action	1	0	1968-69
Arizona State	8	3	1961-62
Baylor	1	0	1954-55
Boston College	0	1	1964-65
Bradley	1	2	1946-47
Brigham Young	65	98	1905-06
Butler	2	0	1962-63
California	2	4	1933-34
Centenary	1	0	1965-66
Clarion State	1	0	1951-52
Colorado	3	14	1937-38
Colorado College	1	0	1933-34
Colorado State College	6	1	1925-26
Colorado State University	41	35	1937-38
Creighton	2	2	1962-63
Dayton	0	1	1957-58
Delaware	0	1	1969-70
Denver	42	31	1922-23
Detroit	0	1	1960-61
Drake	0	1	1959-60
Duquesne	0	1	1947-48
Eastern Oregon	1	0	1941-42
Eastern Washington	2	2	1952-53
Emporia State	0	1	1948-49
Evansville	1	0	1967-68
Fresno State	2	0	1963-64
Georgia Tech	1	0	1960-61
Gonzaga	2	2	1952-53
Hamline	0	1	1950-51
Hastings	1	0	1937-38
Hawaii	2	0	1946-47
Houston	1	1	1961-62
Idaho	6	9	1945-46
Idaho College	2	0	1926-27
Idaho State	22	8	1942-43
Illinois	0	1	1953-54
Iowa	0	1	1949-50
Iowa State	2	2	1950-51
Kansas	2	4	1935-36
Kansas State	0	2	1949-50
Kent State	1	0	1960-61
Kentucky	0	1	1957-58
Kentucky Wesleyan	1	1	1955-56
Lambuth	1	0	1934-35
LaSalle	1	1	1963-64
Lawrence Tech	2	1	1947-48
Long Island	0	1	1946-47
Loras	0	1	1947-48
Los Angeles State	3	1	1951-52
Loyola (California)	5	0	1961-62
Manhattan	1	1	1936-37
Miami (Ohio)	1	0	1952-53
Michigan State	1	0	1962-63
Minnesota	2	1	1964-65
Missouri	1	1	1967-68
Montana	25	12	1913-14
Montana Mines	4	0	1921-22
Montana State	66	38	1913-14

AGGIES vs. OPPONENTS

OPPONENT	W	L	First Game
Morehead State	1	0	1965-66
Nebraska	0	1	1960-61
Nevada	7	0	1935-36
New Mexico	18	4	1951-52
New Mexico State	2	2	1960-61
New York City College	0	1	1947-48
New York University	3	1	1952-53
Niagara	1	0	1959-60
North Dakota	0	1	1928-29
Notre Dame	0	2	1967-68
Occidental	1	0	1924-25
Ohio	0	1	1958-59
Ohio State	1	1	1962-63
Oklahoma	0	1	1938-39
Oklahoma City	2	0	1959-60
Oregon	2	4	1935-36
Oregon State	0	6	1939-40
Pacific	5	0	1951-52
Pepperdine	2	2	1951-52
Pittsburgh	0	2	1949-50
Portland	10	2	1953-54
Providence	1	2	1959-60
Regis	2	2	1948-49
Rutgers	0	1	1966-67
Sacramento State	2	1	1951-52
San Diego State	1	0	1962-63
San Francisco	1	6	1935-36
San Francisco State	2	0	1951-52
San Jose State	7	4	1935-36
Santa Clara	1	1	1951-52
Seattle	8	7	1956-57
South Dakota State	1	0	1960-61
Southern California	7	8	1924-25
Springfield (Massachusetts)	1	0	1946-47
Stanford	1	3	1933-34
St. Bonaventure	2	0	1947-48
St. Joseph's (Philadelphia)	1	1	1946-47
St. Louis	0	1	1967-68
St. Mary's (California)	2	1	1939-40
St. Peters (N. J.)	1	1	1968-69
Tennessee	0	2	1949-50
Texas	1	0	1938-39
Texas A & M	1	0	1963-64
Texas Christian	1	0	1960-61
UTEP	1	4	1962-63
Toledo	0	1	1958-59
Tulsa	0	2	1965-66
UCLA	3	5	1932-33
Utah	63	92	1908-09
Villanova	1	0	1959-60
Washington	1	1	1962-63
Washington State	7	1	1946-47
Washington (St. Louis)	1	3	1953-54
Western Kentucky State	0	2	1947-48
West Texas State	3	2	1958-59
Whittier	1	0	1929-30
Whitworth	0	1	1956-57
Wichita State	4	3	1948-49
Willamette	1	0	1941-42
Wisconsin	0	1	1969-70
Wyoming	20	39	1929-30
Xavier	2	0	1966-67
TOTALS	555	511	



USU ALL-TIME BASKETBALL SCORES

Game-by-Game, 1908-09 to 1969-70

1908-09			1912-13			1914-15		
Coach: Clayton T. Teetzel			Coach: Clayton T. Teetzel			Coach: Joseph K. Jensen		
15 Brigham Young	42		27 Oneida State Academy	44		26 Brigham Young College	38	
16 LDS College	34		75 All-Stars	22		15 Utah	24	
34 Weber State	22		23 Oneida State Academy	27		21 Brigham Young	29	
13 Utah	33		28 LDS College	32		28 Brigham Young College	24	
18 LDS College	40		35 Brigham Young College	30		23 Brigham Young	31	
11 Brigham Young	37		23 Brigham Young	33		19 Utah	36	
13 Brigham Young	53		31 Utah	20				
19 Utah	37		29 Brigham Young	20		132 (1-5)	182	
13 Brigham Young	37		34 Utah	20				
152 (1-8)	335		305 (5-4)	248				
1909-10			1913-14			1915-16		
Coach: Clayton T. Teetzel			Coach: Clayton T. Teetzel			Coach: Joseph K. Jensen		
17 Salt Lake High School	26		60 Salt Lake High School	26		20 Brigham Young College	27	
20 Brigham Young	46		43 BCH	10		18 Brigham Young	42	
26 Brigham Young College	16		78 Oneida State Academy	41		35 Utah	39	
21 LDS College	23		59 Montana State	33		17 Utah	33	
29 Brigham Young College	21		41 Utah	23		21 Brigham Young College	18	
14 YMCA	57		74 Montana	31		39 Brigham Young	23	
15 Utah	69		65 Branch Ag College	18				
31 Brigham Young	47		17 Brigham Young College	21		150 (2-4)	182	
19 LDS College	14		48 Oneida State Academy	29				
21 Utah	38		27 Utah	37				
213 (3-7)	357		21 Brigham Young	41				
1911-12			39 Brigham Young College	29				
Coach: Clayton T. Teetzel			19 Brigham Young	38				
No Scores Available			84 Weber High School	16				
			675 (10-4)	393				

1916-17		
Coach: Joseph K. Jensen		
No Scores Available		
1917-18		
Coach: Joseph K. Jensen		
State Champions		
No Scores Available		
1918-19		
Coach: Joseph K. Jensen		
58 Ricks College	23	
42 Rexburg Athletic Club	23	
29 Montana State	17	
50 Montana State	11	
25 Utah	36	
26 Brigham Young	36	
50 Brigham Young College	20	
48 Brigham Young College	23	
21 Utah	22	
349	(6-3)	211

1919-20		
Coach: E. Lowell Romney		
74 Brigham Young College	29	
55 Brigham Young	27	
129	(2-0)	56

1920-21		
Coach: E. Lowell Romney		
31 Utah Athletic Assn.	28	
37 Logan Coaches	15	
41 Tremonton Athl. Club	21	
26 Utah	27	
45 Brigham Young	43	
58 Montana State	24	
35 Montana State	14	
29 Utah	37	
28 Brigham Young	30	
23 Brigham Young College	25	
353	(6-4)	264

1921-22		
Coach: E. Lowell Romney		
36 Montana Mines	17	
47 Montana State	24	
49 Montana State	33	
38 Mt. St. Charles	15	
41 Preston Athletic Club	25	
39 Western Athletic Club	37	
22 Brigham Young	39	
41 Utah	43	
55 Preston Athletic Club	15	
36 Brigham Young	34	
27 Utah	30	
431	(8-3)	312

1922-23		
Coach: E. Lowell Romney		
42 Montana State	27	
40 Montana State	30	
55 Brigham Young	19	
36 Brigham Young	30	
40 Utah	35	
26 Utah	29	
23 Brigham Young	22	
26 Brigham Young	37	
32 Utah	38	
30 Utah	44	
67 Denver	36	
59 Denver	37	
476	(8-4)	384



1923-24		
Coach: E. Lowell Romney		
26 Montana Mines	17	
29 Montana Mines	11	
24 Montana State	21	
12 Montana State	19	
37 Utah	23	
27 Utah	32	
43 Brigham Young	36	
21 Brigham Young	38	
27 Brigham Young	30	
25 Brigham Young	32	
22 Utah	44	
40 Utah	30	
333	(6-6)	333

1924-25		
Coach: E. Lowell Romney		
26 Brigham Young	29	
42 Brigham Young	22	
30 Utah	33	
26 Utah	22	
38 Montana State	37	
23 Montana State	27	
36 Brigham Young	48	
23 Brigham Young	24	
31 Southern California	23	
21 Southern California	34	
43 Los Angeles Ath. Club	12	
27 Los Angeles Ath. Club	32	
38 Occidental College	20	
80 Lincoln Athletic Club	11	
31 San Diego DeMolay	21	
39 Pacific Athletic Club	13	
30 USC Frosh	28	
33 Utah	21	
30 Utah	23	
647	(12-7)	480

1925-26		
Coach: E. Lowell Romney		
28 Southern California	32	
52 Southern California	17	
35 Montana State	30	
40 Montana State	23	
48 Yellow Cab	15	
49 Brigham Young	31	
32 Brigham Young	35	
50 Utah	26	
33 Utah	28	
40 Utah	31	
36 Utah	49	
43 Brigham Young	52	
36 Brigham Young	34	
61 Montana State	44	
26 Montana State	38	
39 Colorado State College	23	
48 Colorado State College	22	
40 Colorado State College	27	
736	(13-5)	557

1926-27		
Coach: E. Lowell Romney		
66 Idaho College	16	
50 Brigham Young	48	
62 Brigham Young	34	
29 Montana State	35	
24 Montana State	40	
46 Idaho All-Stars	22	
34 Utah	28	
35 Utah	33	
41 Utah	33	
39 Utah	35	
40 Montana State	34	
42 Montana State	44	
44 Brigham Young	38	
42 Brigham Young	35	
594	(11-3)	475

1927-28		
Coach: E. Lowell Romney		
36 Utah	37	
24 Utah	37	
39 Montana State	57	
47 Montana State	44	
43 Mt. St. Charles	30	
47 Mt. St. Charles	34	
34 Brigham Young	49	
39 Brigham Young	31	
42 Montana State	55	
35 Montana State	39	
52 Brigham Young	41	
48 Brigham Young	42	
35 Utah	39	
42 Utah	23	
563	(7-7)	558

1928-29		
Coach: E. Lowell Romney		
43 Vico Oil	34	
19 North Dakota	24	
60 Mt. St. Charles	33	
41 Mt. St. Charles	27	
38 Montana State	57	
47 Montana State	43	
39 Utah	49	
34 Utah	35	
45 Brigham Young	53	
34 Brigham Young	46	
29 Montana State	53	
25 Montana State	69	
37 Mt. St. Charles	28	
34 Mt. St. Charles	44	
42 Utah	27	
44 Utah	37	
45 Brigham Young	49	
52 Brigham Young	50	
708	(8-10)	758

1929-30		
Coach: E. Lowell Romney		
60 38th Infantry	9	
61 Union Pacific	37	
31 Wyoming	29	
32 Southern California	29	
38 Southern California	43	
46 Whittier	12	
47 Utah	40	
40 Utah	38	
39 Brigham Young	37	
37 Brigham Young	53	
38 Montana Mines	22	
44 Montana State	53	
37 Montana State	62	
45 Utah	47	
45 Utah	38	
36 Brigham Young	49	
55 Brigham Young	41	
41 Montana State	34	
48 Montana State	40	
40 Montana State	35	
40 Montana State	43	
37 Montana State	29	
937	(15-7)	820

1930-31		
Coach: E. Lowell Romney		
87 Deseret News	42	
82 Armour Creamery	18	
60 Branch Ag College	29	
60 Branch Ag College	30	
17 Southern California	25	
33 Southern California	25	
27 Los Angeles Ath. Club	42	
49 Pacific Coast Ath. Club	34	
39 Utah	28	
45 Utah	39	
33 Montana State	29	
31 Montana State	29	
61 Brigham Young	59	
39 Brigham Young	45	
39 Utah	43	
39 Utah	41	
51 Brigham Young	61	
40 Brigham Young	53	
50 Montana State	49	
45 Montana State	31	
927	(12-8)	752

1931-32		
Coach: E. Lowell Romney		
52 Gila College	33	
26 Los Angeles Ath. Club	31	
39 California	27	
33 California	20	
21 California	30	
36 Pasadena Ath. Club	38	
23 Long Beach Ath. Club	40	
29 Long Beach Ath. Club	32	
25 Branch Ag College	15	
48 Montana State	26	
20 Montana State	29	
47 Brigham Young	45	
37 Brigham Young	40	
31 Utah	46	
30 Utah	45	
31 Montana State	33	
26 Montana State	37	
29 Utah	36	
40 Utah	42	
32 Brigham Young	39	
50 Brigham Young	63	
54 United Billiards	43	
759	(7-15)	790

1932-33		
Coach: E. Lowell Romney		
65 Texaco Oil	29	
56 United Billiards	43	
69 Piggly Wiggly of Logan	49	
78 Combined Teams	19	
44 Branch Ag College	24	
36 Hancock Oil	44	
39 UCLA	54	
33 Southern California	38	
35 Pasadena Majors	52	
42 Montana State	33	
37 Utah	55	
33 Utah	38	
40 Brigham Young	33	
44 Brigham Young	59	
37 Utah	48	
49 Utah	54	
42 Montana State	57	
50 Montana State	19	
30 Brigham Young	37	
36 Brigham Young	48	
53 House of David	36	
62 House of David	46	
1052	(11-12)	950

1933-34		
Coach: E. Lowell Romney		
81 Clark Insurance	65	
48 Ogden Boosters	42	
57 Denver Athletic Club	51	
44 Colorado College	23	
51 Pasadena Majors	28	
40 Pasadena Majors	22	
46 Stanford	35	
31 California	49	
34 Brigham Young	57	
35 Brigham Young	42	
40 Utah	36	
32 Utah	24	
39 Montana State	33	
42 Montana State	34	
31 Montana State	29	
34 Montana State	26	
37 Brigham Young	48	
40 Brigham Young	35	
35 Utah	43	
44 Utah	51	
844	(14-6)	773

1934-35		
Coach: E. Lowell Romney		
59 Denver Athletic Club	55	
40 Logan Elks	19	
50 McMillan Ring-Frees	38	
44 UCLA	39	
50 Montana State	31	
46 Montana State	40	
48 Logan Elks	30	
38 Brigham Young	39	
41 Brigham Young	27	
58 Utah	53	
50 Utah	37	
48 Brigham Young	47	
39 Brigham Young	40	
57 Montana State	41	
56 Montana State	60	
55 Utah	43	
51 Utah	41	
54 Colorado State College	34	
47 Colorado State College	35	
42 Colorado State College	45	
67 Lambuth College	32	
26 Italian Athletic Club	32	
1066	(17-5)	858



1935-36		
Coach: E. Lowell Romney		
48 Nevada	33	
34 Stanford	73	
43 UCLA	32	
40 San Jose State	36	
34 Oregon	50	
32 San Francisco	35	
36 UCLA	40	
44 UCLA	34	
50 Utah	45	
46 Utah	41	
45 Utah	29	
34 Utah	35	
36 Brigham Young	35	
37 Brigham Young	33	
32 Brigham Young	39	
51 Brigham Young	41	
33 Montana State	37	
37 Montana State	34	
74 Montana State	37	
58 Montana State	42	
42 Wyoming	32	
33 Wyoming	48	
37 Kansas		
(Olympic Playoffs)	39	
42 Kansas		
(Olympic Playoffs)	37	
50 Kansas		
(Olympic Playoffs)	33	
48 Wilmering YMCA		
(Olympic Playoffs)	62	
1138	(17-10)	1060

1936-37			1939-40		
Coach: E. Lowell Romney			Coach: E. Lowell Romney		
32	Cache Valley All-Stars	30	64	Clark's All-Stars	44
40	Brigham Young	31	38	Oregon State	39
35	Brigham Young	49	39	Oregon State	41
32	Manhattan U.	39	60	College of Idaho	35
29	Pennsylvania Ath. Club	38	43	California	33
35	Montana State	40	41	St. Mary's (Calif.)	32
42	Montana State	41	31	Colorado	28
51	Utah	40	46	Wyoming	33
41	Utah	39	36	Denver	27
45	Brigham Young	55	46	Denver	56
47	Brigham Young	38	30	Wyoming	27
35	Montana State	40	55	Brigham Young	35
42	Montana State	54	36	Utah	29
30	Utah	73	43	Brigham Young	49
43	Utah	59	38	Colorado	44
			52	Colorado State U.	56
579	(6-9)	666	58	Colorado State U.	42
			40	Utah	41

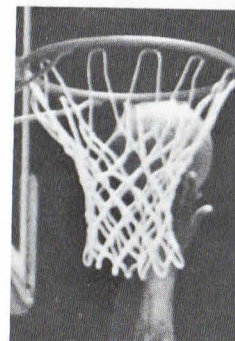
1937-38			1940-41		
Coach: E. Lowell Romney			Coach: E. Lowell Romney		
55	Ecker Studio	59	48	Ogden Pioneers	33
63	Ecker Studio	45	39	Watts All-Stars	38
66	Watkins Motor	47	26	Oregon State	43
56	Ecker Studio	59	34	Oregon State	39
61	Hastings College	37	43	California	47
73	Cache Valley All-Stars	57	52	Watts All-Stars	49
65	Nevada	37	42	St. Mary's (Calif.)	44
57	Ecker Studio	62	41	San Jose State	55
32	Wyoming	44	33	Stanford	64
57	Colorado State U.	34	34	Brigham Young	66
60	Brigham Young	53	34	Colorado State U.	27
55	Wyoming	57	34	Colorado	41
35	Utah	59	31	Colorado State U.	40
62	Colorado State U.	52	21	Utah	44
75	Denver	48	32	Colorado	43
35	Colorado	59	35	Wyoming	41
59	Colorado	58	44	Denver	45
48	Denver	46	34	Denver	43
47	Utah	63	32	Wyoming	50
50	Brigham Young	58	48	Brigham Young	47
			24	Utah	49
1111	(11-9)	1034			

1938-39			1941-42		
Coach: E. Lowell Romney			Coach: Robert W. Burnett		
39	Watts All Stars	31	56	Weber Junior College	36
50	Mint Cafe	22	38	Willamette	31
61	Eckers Studio	35	30	Oregon State	46
56	Weber Junior College	28	56	Eastern Oregon	42
45	Montana	36	24	Brigham Young	54
44	Montana	52	31	Colorado	49
66	Weber Junior College	58	34	Denver	18
92	Kurley Killowatts	16	35	Utah	53
43	Nevada	36	47	Colorado State U.	34
35	California	42	41	Colorado State U.	26
54	Brigham Young	46	43	Wyoming	60
44	Colorado State U.	37	39	Denver	54
18	Colorado	46	52	Brigham Young	57
52	Colorado State U.	34	34	Utah	49
53	Utah	46	54	Wyoming	73
43	Colorado	56	46	Colorado	57
45	Utah	67			
47	Wyoming	45			
64	Denver	47			
54	Denver	39			
41	Wyoming	50			
53	Brigham Young	38			
39	Oklahoma (NCAA)	50			
51	Texas (NCAA)	49			
1189	(17-7)	976	665	(6-10)	739

1942-43			1943-44		
Coach: D. D. Young			No Competition		
83	Ft. Douglas	24			
85	Cache Valley All-Stars	53			
62	Weber Junior College	38			
66	Idaho State	41			
74	Ricks College	53			
44	Montana	48			
47	Montana State	38			
43	Montana	44			
39	Montana State	42			
52	Idaho State	46			
63	Weber Junior College	52			
67	Armstrong	43			
57	Logan Marines	38			
43	Brigham Young	38			
41	Brigham Young	58			
50	Utah	44			
28	Utah	46			
51	Utah	42			
55	Utah	52			
38	Brigham Young	44			
59	Brigham Young	63			
1143	(14-7)	947			

1944-45			1945-46		
Coach: D. D. Young			Coach: H. B. Lee		
50	Cache Coaches	38	64	Weber Junior College	48
51	Idaho Southern	43	50	Clearfield	23
79	Weber Junior College	29	37	Montana	36
63	Weber Junior College	22	33	Idaho	55
64	Ft. Douglas	40	41	Weber Junior College	47
48	Kearns	50	47	Idaho Southern	32
40	Montana State	41	49	Idaho Southern	39
68	Montana State	30	41	Brigham Young	47
49	Idaho Southern	54	48	Brigham Young	64
47	Utah	62	37	Denver	45
32	Colorado	62	62	Denver	35
41	Brigham Young	50	39	Colorado	59
46	Colorado	50	33	Colorado	42
59	Utah	80	36	Colorado State U.	43
44	Wyoming	36	35	Colorado State U.	34
80	Denver	53	44	Utah	69
72	Denver	53	31	Utah	34
49	Wyoming	52	30	Wyoming	45
37	Brigham Young	64	52	Wyoming	66
1019	(9-10)	909			

1946-47			1947-48		
Coach: H. B. Lee			Coach: Joe Whitesides		
66	Weber Junior College	35	49	Idaho State	42
51	Idaho Southern	31	58	Montana State	66
50	Washington State	44	50	Montana State	57
44	San Francisco	35	42	Montana State	36
54	Montana State	50	54	San Francisco	55
44	Weber Junior College	53	63	Montana	58
53	Bradley	72	51	St. Bonaventure	47
63	Springfield	55	46	CCNY	82
58	American Institute	40	43	Duquesne	65
48	St. Joseph (Pa.)	52	62	Lawrence Tech	58
38	Long Island U.	56	49	Western Kentucky	80
45	Colorado	56	48	Loras	55
45	Denver	44	68	Brigham Young	65
50	Utah	49	64	Montana	68
34	Wyoming	43	65	Montana	78
40	Colorado	34	44	Utah	42
55	Colorado State U.	38	51	Denver	59
43	Colorado State U.	35	47	Brigham Young	66
45	Wyoming	60	29	Utah	55
41	Utah	55	64	Colorado State U.	45
40	Brigham Young	62	40	Wyoming	46
39	Denver	44	51	Colorado State U.	65
52	Brigham Young	49	54	Denver	71
51	Hawaii	37	27	Wyoming	39
1149	(14-10)	1129	1219	(8-16)	1400



1948-49			1949-50		
Coach: Joe Whitesides			Coach: Joe Whitesides		
47	Idaho State	39	65	Idaho State	55
38	Oregon State	52	72	Oregon	66
38	Idaho	37	43	Southern California	50
75	Montana	67	39	Denver	60
64	Montana State	37	58	Colorado State U.	43
57	California	72	41	Regis	50
41	San Jose State	61	72	Idaho State	43
47	San Jose State	37	69	Lawrence Tech	59
42	Regis	51	65	Montana State	56
43	Wichita State	39	64	Montana State	54
63	Emporia State	73	62	Tennessee	66
50	Denver	52	54	Pittsburgh	50
57	Denver	48	60	Iowa	62
50	Colorado State U.	43	45	Kansas State	70
64	Colorado State U.	52	51	Denver	56
51	Brigham Young	60	59	Denver	47
46	Brigham Young	64	38	Colorado State U.	33
57	Denver	59	54	Utah	51
54	Denver	83	68	Utah	50
55	Colorado State U.	57	41	Brigham Young	71
58	Utah	64	47	Brigham Young	48
42	Utah	61	43	Wyoming	36
58	Brigham Young	54	28	Wyoming	32
54	Brigham Young	67	48	Colorado State U.	46
55	Wyoming	66	73	Utah	52
31	Wyoming	45	36	Utah	49
52	Utah	62	42	Colorado State U.	36
40	Utah	58	42	Wyoming	48
62	Colorado State U.	63	33	Wyoming	59
44	Wyoming	63	46	Brigham Young	60
44	Wyoming	65	35	Brigham Young	63
1579	(10-21)	1752	54	Colorado State U.	48
			50	Denver	44
			53	Denver	53

1950-51			1951-52		
Coach: H. Cecil Baker			Coach: H. Cecil Baker		
67	Idaho State	54	51	Idaho State	50
69	Idaho State	54	53	Idaho State	62
70	Montana State	62	85	Arizona State	70
46	Colorado	43	68	Sacramento State	64
64	Oregon	66	51	Nevada	50
38	Kansas	59	64	Pacific	54
41	Iowa State	52	54	San Jose State	59
64	Hamline	82	49	Sacramento State	60
67	Montana	59	73	San Francisco State	60
49	Wyoming	69	53	Los Angeles State	60
63	Denver	63	62	Pepperdine	71
63	Colorado State U.	62	72	Montana	74
59	Brigham Young	72	46	Colorado State U.	41
72	Brigham Young	68	39	Wyoming	69
63	Denver	65	53	Wyoming	47
51	Denver	56	45	Utah	57
53	Idaho	69	57	Brigham Young	40
59	Colorado State U.	60	68	New Mexico	51
56	Wichita State	50	62	New Mexico	58
56	Kansas State	66	46	Denver	58
51	Utah	50	85	Colorado State U.	62
48	Utah	61	67	Brigham Young	69
57	Brigham Young	83	82	Denver	63
42	Brigham Young	51	70	Utah	60
53	Utah	35	60	Montana State	79
44	Utah	52	53	Montana State	57
50	Colorado State U.	49	77	Regis	65
64	Colorado State U.	67	72	Montana	60
54	Wyoming	55	85	Clarion State	68
54	Wyoming	58	62	Lawrence Tech	71
66	Denver	60			
73	Denver	80			
52	Wyoming	69			
49	Wyoming	53			
1909	(12-22)	2054			

1949-50			1951-52		
Coach: Joe Whitesides			Coach: H. Cecil Baker		
65	Idaho State	55	51	Idaho State	50
72	Oregon	66	53	Idaho State	62
43	Southern California	50	85	Arizona State	70
39	Denver	60	68	Sacramento State	64
58	Colorado State U.	43	51	Nevada	50
41	Regis	50	64	Pacific	54
72	Idaho State	43	54	San Jose State	59
69	Lawrence Tech	59	49	Sacramento State	60
65	Montana State	56	73	San Francisco State	60
64	Montana State	54	58	Los Angeles State	60
62	Tennessee	66	53	Pepperdine	71
54	Pittsburgh	50	62	Santa Clara	63
60	Iowa	62	72	Montana	74
45	Kansas State	70	46	Colorado State U.	41
51	Denver	56	39	Wyoming	69
59	Denver	47	53	Wyoming	47
38	Colorado State U.	33	45	Utah	57
54	Utah	51	57	Brigham Young	40
68	Utah	50	68	New Mexico	51
41	Brigham Young	71	62	New Mexico	58
47	Brigham Young	48	46	Denver	58
43	Wyoming	36	85	Colorado State U.	62
28	Wyoming	32	67	Brigham Young	69
48	Colorado State U.	46	68	Denver	63
73	Utah	52	70	Utah	60
36	Utah	49	60	Montana State	79
49	Colorado State U.	36	53	Montana State	57
42	Wyoming	48	77	Regis	65
33	Wyoming	59	72	Montana	60
46	Brigham Young	60	85	Clarion State	68
35	Brigham Young	63	62	Lawrence Tech	71
54	Colorado State U.	48			
52	Denver	44			
50	Denver	53			

1756	(18-16)	1766	1922	(17-14)	1868
------	---------	------	------	---------	------

1952-53		
Coach: H. Cecil Baker		
64	Colorado	81
66	Colorado	70
62	Idaho State	50
48	Idaho State	63
72	Washington State	65
76	Montana State	74
66	Montana State	60
72	Gonzaga	83
69	Eastern Washington	71
67	New York U.	61
79	Miami (Ohio)	78
59	Manhattan U.	57
66	Brigham Young	72
54	Wyoming	64
76	Colorado State U.	78
62	Utah	58
63	San Jose State	59
55	San Jose State	69
68	Utah	75
60	Brigham Young	77
87	Montana	78
83	Denver	73
76	New Mexico	70
74	Colorado State U.	61
58	Wyoming	56
69	Denver	62
91	New Mexico	99
83	Gonzaga	64
67	Gonzaga	65
61	Montana	76
2053	(17-13)	2069

1954-55		
Coach: H. Cecil Baker		
67	Idaho State	71
66	Idaho State	58
68	Washington State	69
73	Washington State	72
88	Idaho	90
80	Baylor	61
78	Montana State	61
78	Montana State	74
75	Colorado State U.	65
60	Wyoming	65
55	Utah	88
62	Brigham Young	58
86	Montana	61
62	Utah	60
89	New Mexico	63
65	Denver	64
72	Colorado State U.	66
48	Wyoming	68
76	Brigham Young	71
63	Denver	77
79	New Mexico	68
79	Montana	70
1569	(14-8)	1511

1956-57		
Coach: H. Cecil Baker		
60	Idaho State	66
59	Seattle	66
60	Idaho State	68
68	Eastern Washington	55
49	Whitworth	67
58	Washington State	57
50	Idaho	64
61	Idaho	58
83	Montana State	100
78	Montana State	73
68	Utah	64
80	Montana	79
78	Wyoming	86
72	Colorado State U.	89
76	Brigham Young	75
76	Brigham Young	93
66	Denver	69
84	New Mexico	73
76	Wyoming	62
65	Colorado State U.	67
67	Montana	78
90	Utah	92
64	Denver	60
69	New Mexico	61
1657	(11-13)	1722



1953-54		
Coach: H. Cecil Baker		
70	Portland	68
94	Portland	78
65	Nevada	63
81	Nevada	65
60	Montana State	70
77	Montana State	66
44	Idaho State	53
66	Idaho State	74
98	Eastern Washington	47
67	New York U.	86
71	St. Joseph (Pa.)	64
62	Washington (Mo.)	64
61	Illinois	88
58	Utah	71
54	Wyoming	65
60	Colorado State U.	68
73	Brigham Young	68
62	Utah	74
63	Brigham Young	75
64	Colorado State U.	58
60	Denver	65
74	New Mexico	97
62	Wyoming	46
70	Montana	66
67	Denver	55
65	New Mexico	55
85	Montana	56
1833	(14-13)	1805

1955-56		
Coach: H. Cecil Baker		
68	Idaho State	64
69	Idaho State	58
92	Gonzaga	91
68	Washington State	65
71	Idaho	76
64	Montana State	59
81	Montana State	85
55	Utah	74
73	Kentucky Wesleyan	84
71	Pacific	64
81	Pittsburgh	84
61	Washington (Mo.)	82
63	Wyoming	61
79	Colorado State U.	58
60	Montana	62
63	Brigham Young	56
76	Denver	74
75	New Mexico	62
62	Brigham Young	92
73	Wyoming	95
84	Colorado State U.	80
73	Montana	67
68	Utah	75
80	Denver	110
63	New Mexico	74
1835	(13-13)	1937

1957-58		
Coach: H. Cecil Baker		
A 62	Portland	86
A 53	Oregon	63
A 49	Oregon	78
H 66	Montana State	75
H 82	Montana State	70
A 53	Washington (Mo.)	63
A 47	Dayton	66
A 64	Kentucky	92
A 63	Idaho	64
A 66	Idaho	75
A 57	Utah	81
H 70	Wyoming	71
H 62	Colorado State U.	84
A 47	Montana	59
H 55	Brigham Young	67
H 72	Denver	68
H 60	New Mexico	46
A 66	Brigham Young	69
A 56	Colorado State U.	74
A 68	Wyoming	72
H 75	Montana	77
H 78	Utah	87
A 78	New Mexico	68
A 68	Denver	74
1517	(4-20)	1729

1958-59		
Coach: H. Cecil Baker		
A 65	Idaho State *	62
A 66	Portland *	68
H 91	West Texas State	61
H 66	Washington State	57
H 83	Arizona	57
H 79	St. Mary's (Calif.)	63
A 64	Idaho	63
A 69	Idaho	60
A 96	Kentucky Wesleyan **	86
A 72	Ohio **	80
A 69	Washington (Mo.)	66
A 61	Toledo	69
H 71	Utah	82
A 82	Wyoming	76
A 88	Colorado State U.	77
H 75	Montana	59
A 54	Brigham Young	77
A 68	Denver	80
A 81	New Mexico	72
H 74	Brigham Young	67
H 81	Colorado State U.	74
H 79	Wyoming	56
A 81	Montana	79
A 63	Utah	66
H 93	New Mexico	72
H 88	Denver	71
1965	(19-7)	1799

* ISU Invitational
Pocatello, Idaho
**All-America City Invitational,
Owensboro, Ky.

1960-61		
Coach: H. Cecil Baker		
A 67	New York U.	65
A 68	Detroit	70
A 60	Nebraska	65
H 91	South Dakota State	78
A 72	Western Kentucky *	86
A 67	Georgia Tech *	62
H 74	New Mexico	65
H 110	Los Angeles State	88
H 83	Kent State	62
A 87	Texas Christian **	61
A 63	Wichita State **	73
A 57	New York U. **	45
H 70	Utah	85
A 73	Wyoming	86
A 44	Colorado State U.	81
H 58	Montana	57
A 57	Brigham Young	75
A 61	Denver	67
A 68	New Mexico	75
H 94	Brigham Young	73
H 60	Colorado	64
H 73	Wyoming	61
A 58	Montana	66
A 84	Utah	96
H 108	New Mexico	78
H 72	Denver	77
1879	(12-14)	1861

*Blue Grass Tourney
Louisville, Ky.
**All-College
Oklahoma City

1962-63		
Coach: LaDell Andersen		
A 50	Ohio State	62
A 80	Butler	72
H 79	Montana State	72
H 85	Montana State	66
H 59	Texas Western	66
H 83	Regis	75
H 101	San Diego State	57
H 87	Iowa State	52
H 102	Michigan State	87
A 75	UCLA *	89
A 71	Washington *	60
A 78	Southern California *	65
A 69	Utah	55
H 69	Brigham Young	58
H 84	Montana	58
H 75	Colorado State U.	68
H 88	Denver	62
A 70	Brigham Young	67
H 97	Utah	69
H 85	Montana	67
A 55	Texas Western	57
A 78	New Mexico State	48
A 65	Air Force	66
A 74	Denver	70
H 69	Creighton	68
A 60	Colorado State U.	67
A 75	Arizona State (NCAA)	79
1994	(20-7)	1724

*L. A. Classic



1959-60		
Coach: H. Cecil Baker		
H 86	Idaho State	67
A 85	Seattle	73
A 74	Portland	67
A 71	Iowa State	66
A 73	Drake	83
H 72	Washington State	58
H 77	Pacific	67
A 56	Idaho	57
A 73	Idaho	61
A 75	Niagara *	65
A 75	Wichita State *	68
A 75	Oklahoma City *	59
A 73	Utah	61
H 88	Wyoming	60
H 73	Colorado State U.	65
A 83	Montana	75
H 84	Brigham Young	53
H 99	Denver	69
H 86	New Mexico	59
A 75	Brigham Young	64
A 60	Colorado State U.	68
A 81	Wyoming	67
H 89	Montana	63
H 75	Utah	77
A 103	New Mexico	72
A 76	Denver	71
A 73	Villanova (NIT)	72
A 62	Providence (NIT)	68
A 99	St. Bonaventure (NIT)	83
2271	(24-5)	1938

*All-College (Champion)
* Oklahoma City, Okla.

1961-62		
Coach: LaDell Andersen		
A 72	Los Angeles State	67
A 67	Arizona	54
A 67	Idaho State	63
H 105	Loyola (Calif.)	91
H 86	Idaho State	71
H 72	San Jose State	58
H 90	San Francisco State	60
H 77	Pacific	64
H 72	Southern California	74
A 80	Oklahoma City *	71
A 46	Houston *	51
A 88	Wichita State *	90
A 72	Utah	77
H 69	Colorado State U.	59
H 72	Wyoming	59
A 62	Montana	57
H 88	Brigham Young	69
H 76	New Mexico	64
H 83	Denver	79
A 80	Brigham Young	70
A 78	Wyoming	65
A 77	Colorado State U.	70
H 76	Utah	78
H 66	Montana	62
A 82	Denver	64
A 88	New Mexico	77
A 78	Arizona State (NCAA)	73
A 62	UCLA (NCAA)	73
A 71	Pepperdine (NCAA)	75
2202	(22-7)	1985

*All-College
Oklahoma City

1963-64		
Coach: LaDell Andersen		
H 97	Loyola (California)	85
H 102	Fresno State	71
H 94	Texas A & M	71
A 91	Creighton	96
A 68	Iowa State	77
A 115	New Mexico State	75
H 64	Arizona	60
H 95	Bradley	90
H 79	Ohio State	66
H 84	Utah	72
H 83	Air Force	73
A 99	Montana State	70
H 85	Colorado State U.	70
H 105	Brigham Young	90
A 90	Brigham Young	73
A 67	Utah	79
H 75	Denver	56
A 77	Montana State	73
A 88	Montana State	80
A 85	Colorado State U.	84
A 74	Denver	72
H 94	Seattle	96
H 103	Montana State	81
A 85	LaSalle	90
A 125	American University	100
A 75	Providence	85
A 92	Arizona State (NCAA)	90
A 58	San Francisco (NCAA)	64
A 78	Seattle (NCAA)	88
2527	(21-8)	2277

1964-65

Coach: LaDell Andersen		
H 107	Idaho State	60
H 88	Butler	84
H 96	Loyola (California)	69
H 98	Pacific	74
H 101	Nevada	80
A 69	Bradley	75
A 69	Minnesota	88
H 86	San Jose State	73
A 71	San Francisco	86
A 98	Arizona State *	96
A 118	Boston College *	120
A 86	Utah	84
H 90	Brigham Young	99
H 78	Colorado State U.	89
A 62	Texas Western	68
A 93	Arizona State	99
H 104	Utah	111
A 80	Brigham Young	89
H 91	Denver	62
A 67	Denver	66
A 74	Colorado State U.	89
H 71	Seattle	67
H 98	Montana State	71
H 72	Portland	66
A 69	Montana State	71

2136 (13-12) 2036

*Hawaii Invitational

1966-67

Coach: LaDell Andersen		
H 76	Pepperdine	51
H 89	Montana State	78
H 89	Idaho	74
H 112	Loyola (California)	66
H 76	Fresno State	64
H 92	Providence	85
A 52	Tulsa	67
A 106	Wichita State	123
H 107	Xavier	88
H 79	Australian Nationals	70
A 66	Brigham Young	92
A 89	Utah	76
H 88	Swedish Nationals	38
H 124	Creighton	96
H 103	Seattle	91
H 83	Colorado State U.	70
H 106	Hawaii	64
H 62	Utah	61
H 113	Brigham Young	88
H 97	Denver	83
A 82	Denver	81
A 90	Arizona State	59
H 86	Portland	63
H 75	Texas Western (2 OT)	79
A 84	Montana State	83
A 77	Seattle	76
A 76	Rutgers (NIT)	78

2454 (22-6) 2154

1968-69

Coach: LaDell Andersen		
A 88	Wyoming	113
A 87	Missouri	97
H 80	Seattle	90
H 83	Washington	75
A 81	Denver	79
H 72	Wyoming	89
H 85	Montana State	90
H 61	Kansas	67
H 84	San Jose State	83
A 71	San Francisco*	73
A 81	Portland*	65
H 83	Colorado State U.	73
A 89	Utah	107
H 91	Brigham Young	84
A 102	Denver	87
A 91	Arizona State	103
H 92	West Texas State	102
A 82	Brigham Young	113
H 95	Utah	92
H 95	Athletes in Action	85
A 66	Seattle	68
A 76	Montana State	86
A 82	Notre Dame	108
A 60	Colorado State U.	70
H 94	Denver	78
A 83	West Texas State	95
A 77	St. Peter's (N.J.)	95
2,231	(10-17)	2,367

*Bluebonnet Classic, Houston



1965-66

Coach: LaDell Andersen		
H 102	Montana State	68
A 81	Seattle	85
A 85	Idaho	88
H 88	Loyola (California)	70
H 89	Centenary	73
H 88	Arizona State	81
H 90	Morehead State	63
H 66	San Francisco	76
H 66	Tulsa	67
H 97	Minnesota	72
A 77	Oregon *	66
A 79	Stanford *	93
A 83	Arizona State *	77
A 83	Portland	75
H 72	Denver	79
H 63	Colorado State U.	72
A 81	Brigham Young	115
H 109	LaSalle	97
H 79	Utah	94
A 91	Montana State	72
H 88	Brigham Young	96
A 88	Utah	127
H 84	Seattle	74
A 64	Colorado State U.	74
A 81	Denver	100
A 79	Creighton	86

2153 (12-14) 2140

*Far West Classic
Portland, Oregon

1967-68

Coach: LaDell Andersen		
A 55	Kansas	84
A 87	Xavier	85
H 88	Montana State	80
H 90	Utah	102
H 116	Evansville	88
H 102	Wichita State	83
H 110	San Jose State	93
H 72	Notre Dame	73
H 87	Missouri	81
A 78	St. Louis *	97
A 73	Minnesota *	65
A 66	Tennessee *	85
H 94	American University	78
A 98	Brigham Young	104
H 110	Seattle	93
A 80	Denver	100
A 74	Colorado State U.	80
A 95	Montana State	87
H 103	Brigham Young	118
A 92	Utah	106
H 96	Arizona State	80
H 96	Colorado State U.	75
H 98	Denver	96
A 67	Seattle	69
A 71	Portland	69

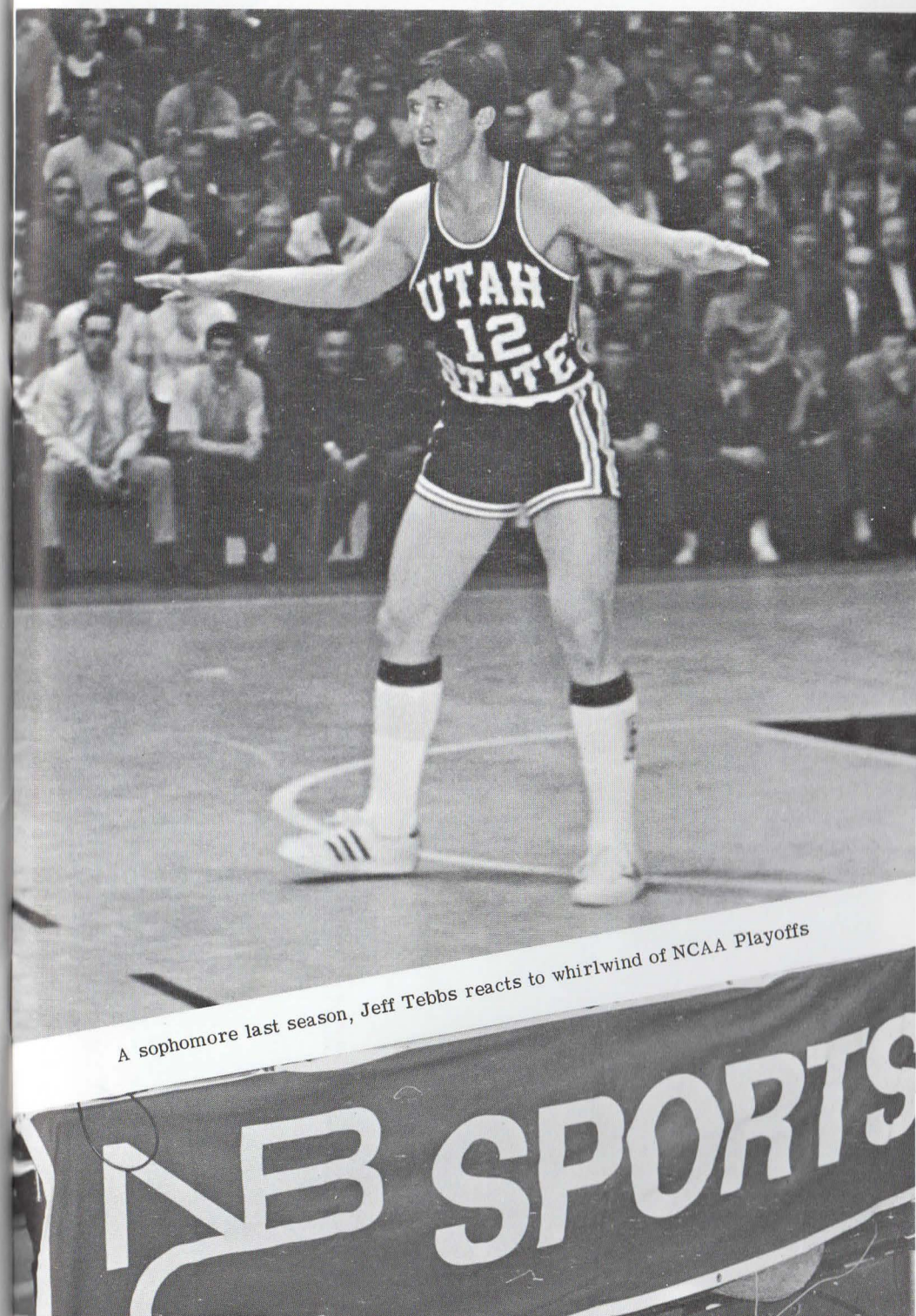
2198 (14-11) 2171

*L.A. Classic

1969-70

Coach: LaDell Andersen		
H 113	Pepperdine	82
H 85	Sacramento	65
A 90	Utah	72
H 125	St. Peter's	108
H 112	West Texas	87
A 61	Washington	90
A 74	Wisconsin**	81
A 80	Delaware**	66
H 99	Cal State (L.A.)	86
H 105	Seattle	86
H 97	BYU	94
H 106	Utah (OT)	98
H 95	Portland	83
A 66	Colo. State	80
A 68	California (OT)	63
H 91	Houston	84
A 111	Portland	68
H 90	N. Mexico State	95
H 104	Denver	77
H 112	Arizona State	102
A 73	Denver	78
A 82	Seattle	81
H 80	Air Force	78
A 83	West Texas	73
A 92	N. Mexico State	104
A 86	BYU	73
A 91	UTEP* at BYU	81
A 69	Santa Clara*	68
A 79	UCLA*	101
2,619	(22-6)	2,404

**Milwaukee Classic
*NCAA at U. Washington



AGGIE MEDIA

Gary Evans, sports director, Station KVNU, Logan (84321)
Sports director, Station KBLW, Logan
Kurt McGregor, sports editor, Herald Journal (PM), Logan
Hack Miller, exec. sports editor, Deseret News (PM), Salt Lake City
George Ferguson, sports managing editor, Deseret News (PM), Salt Lake City
Brent Checketts, sports desk, Deseret News (PM), Salt Lake City
Bill Marcroft, sports director, KUTV, Salt Lake City (6:20-10:20 PM)
Paul James, sports director, KSL-TV, Salt Lake City (6:20-10:20 PM)
Bill Harrington, KCPX-TV, Salt Lake City (5:20-11:20 PM)
John Mooney, exec. sports editor, Tribune (AM), Salt Lake City
Marion Dunn, sports desk, Tribune (AM), Salt Lake City
Ensign Ritchie, sports editor, Standard-Examiner (PM), Ogden
Joe Watts, sports editor, Provo Daily Herald (PM), Provo
Don Hughes, Station KRGO, Salt Lake City
Sports director, Station KLUB, Salt Lake City
Sports director, Station KALL, Salt Lake City
Sports editor, United Press International, Salt Lake City (Tribune Bldg.)
Sports editor, Associated Press, Salt Lake City (Tribune Bldg.)
Sports director, Station KSUB, Cedar City
Keith Martindale, Station KVSI, Montpelier, Idaho
Sports director, Station KPST, Preston, Idaho
Sports director, Station KBRV, Soda Springs, Idaho
Sports editor, Student Life, USU, Logan
Jerry Allen, KUSU-TV, USU, Logan
Pete Zimowsky, sports, News-Journal, Brigham City
Sports director, Station KBUH, Brigham City
Sports director, Station KVOG, Ogden
Sports director, Station KLO, Ogden
Sports director, Station KSVN, Ogden
Sports director, Station KBBC, Bountiful

USU ATHLETIC INFORMATION

Ken Mitchell, Athletic Information Office, Logan, Utah 84321
AC 801 752-4100 Ex. 7437
Home Phone: 752-2466





1970-71 USU Freshman Team, L-R: (Front) Paul Jeppesen, graduate assist. coach, Dan Palley, Gary Erickson, Neal Matthews, Kent Baugh, coach Dutch Belnap. (Back) Loyal Summers, manager, Dale Allred, Glenn Hansen, Dan Dressen, Rex McKee, Jim Boatwright, Shawn Johnson, Jack Peck, Roland Black.



1970-71 USU Varsity, L-R (Front) Dale Brown, assistant coach, Bryan Pavlish, Pat Cooley, Kenny Thompson, Jeff Tebbs, Terry Wakefield, head coach LaDell Andersen. (Back) Dick Melhart, trainer, Dutch Belnap, freshman coach, Ed Epps, Dave Andersen, Walter Bees, Lafayette Love, Marvin Roberts, Robert Lauriski, Ron Hatch, Nate Williams, Steven Christensen, mgr.